



Agricultural Consistency Ordinance

2040 Ukiah General Plan – Implementation

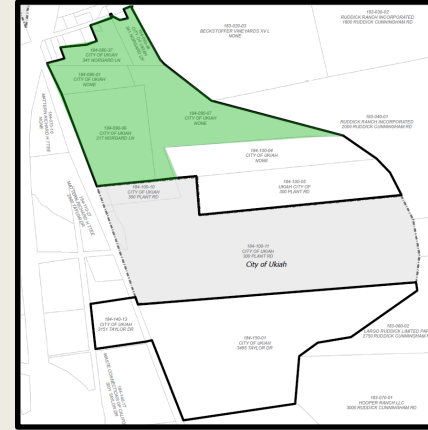
**City of Ukiah
Department of Community Development
Planning Division**

02/19/2025

Agriculture Element Implementation Program C

The City shall revise agricultural standards and use terminology to be consistent with adjacent jurisdictions within the Ukiah Valley for the support of future annexation efforts





Ukiah Wastewater Treatment Plant

Roughly 39 acres
adjacent to the Plant

(-A) Combining
District designation

Ordinance Amendments

City of Ukiah	County of Mendocino	
Zoning Districts		Definitions
Agricultural Exclusive (A-E) UCC §9125	Agricultural (A-G) MCC Ch. 20.052	Civic Use Types (Ch. 20.020)
Agricultural Combining (-A) UCC §9127	Upland Residential (U-R) MCC Ch. 20.056	Commercial Use Types (Ch. 20.024)
	Rangeland (R-L) MCC Ch. 20.060	Agricultural Use Types (Ch. 20.032)

*Recommend correction to §9174.2(F)(4):
A Cannabis Cultivation Business located in the A-E district
~~and in the PF District or~~ with an A- overlay will not be
subject to the location limitations set forth in Subsections
F.1.a through F.1.e of this Section.





Preserve Agricultural Lands

- Supports efficient integration between the City and A-G zoned areas in the event of annexation
- Reduces uncertainty for property owners and active agricultural operations
- Standardizes land-use terminology, setbacks, and land uses

Plan Together

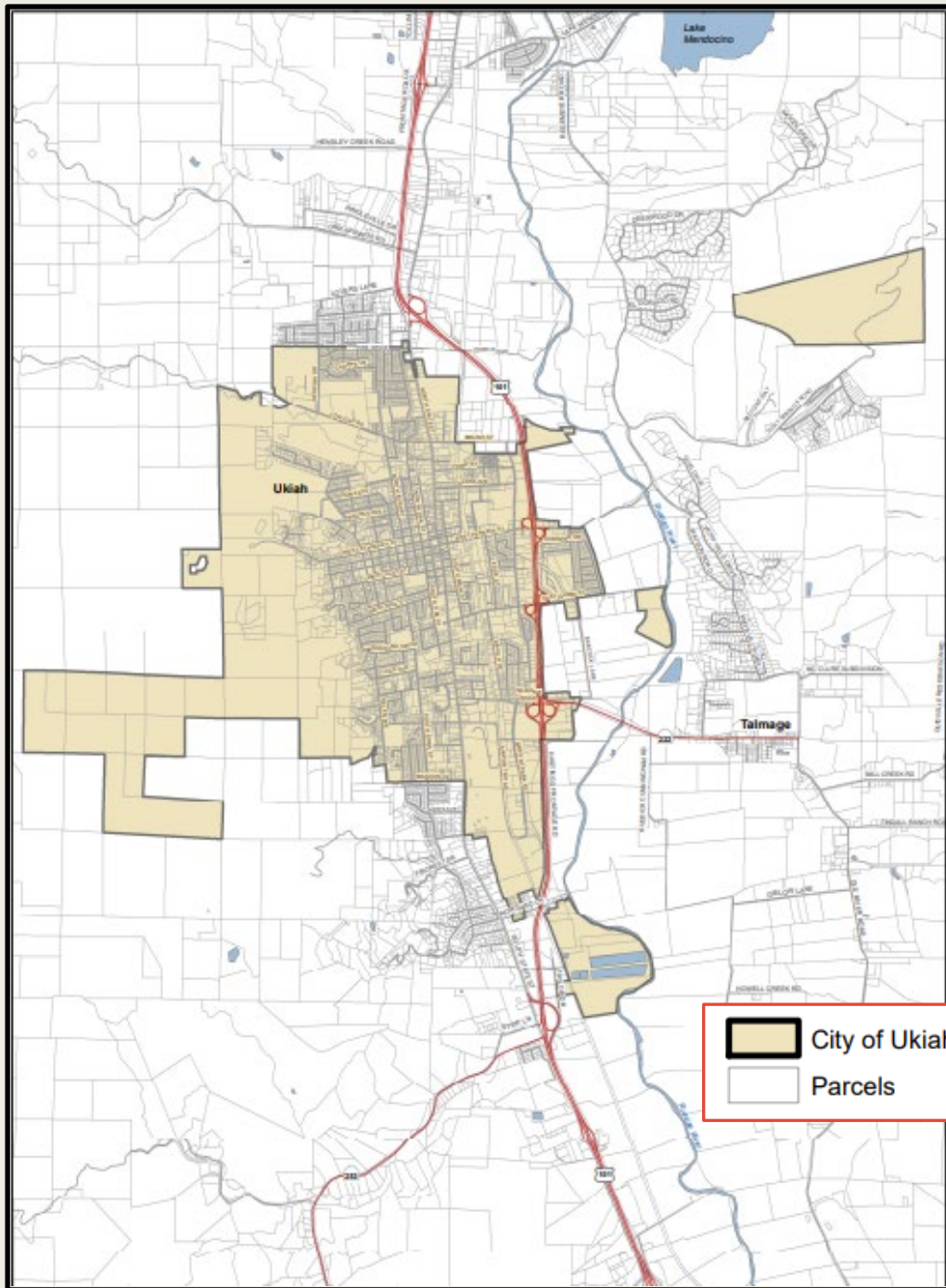
Mendocino County Farm Bureau

- Parcel size and setback consistency

City Attorney

- Alignment with California and City of Ukiah regulations





City of Ukiah

Recommendation



Introduce by title only an ordinance amending the Ukiah City Code to preserve and strengthen agricultural uses in and around Ukiah consistent with the Ukiah 2040 General Plan, and incorporating the recommended correction to §9174.2(F)(4)

The background is a light beige color. It features several organic, rounded shapes with white outlines. These shapes contain different textures: a large purple one on the top left, a dark brown one on the top right, a light brown one with small dark specks in the center, a dark green one with fine yellow fibers on the bottom left, and a dark brown one with fine yellow fibers on the bottom right.

Questions?