



(FRONT ENTRY; SOUTH SIDE)



(FRONT WALL; SOUTH SIDE)



(BACK WALL; NORTH SIDE)

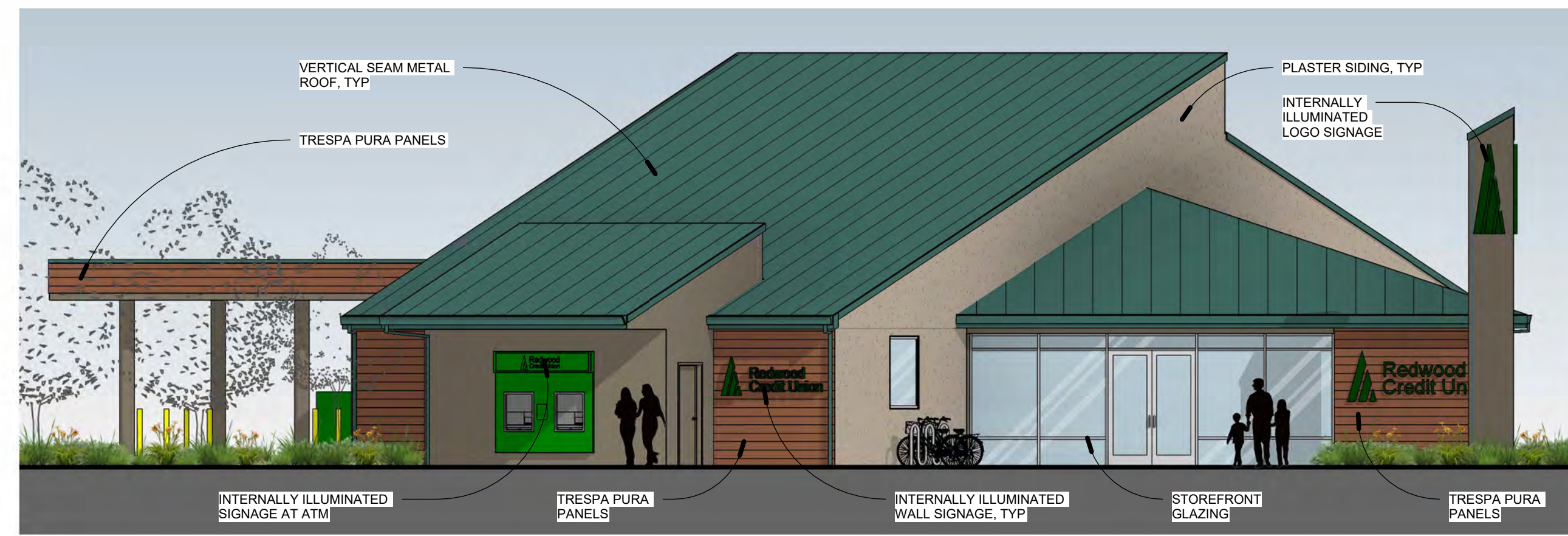


(BACK ENTRY; NORTH SIDE)



CONCEPTUAL SOUTH ELEVATION

SIGNAGE NOTE: 132' PARCEL FRONTAGE X 1.5 = 198 SQ FT ALLOWED FACING EAST PERKINS ST: LOGO & LETTERS TOTAL SIZE = 40 SQ FT



CONCEPTUAL SOUTHEAST ELEVATION



CONCEPTUAL EAST ELEVATION

SIGNAGE NOTE: 132' PARCEL FRONTAGE X 1.5 = 198 SQ FT ALLOWED FACING EASTWARD: LOGO & LETTERS TOTAL SIZE = 46 SQ FT

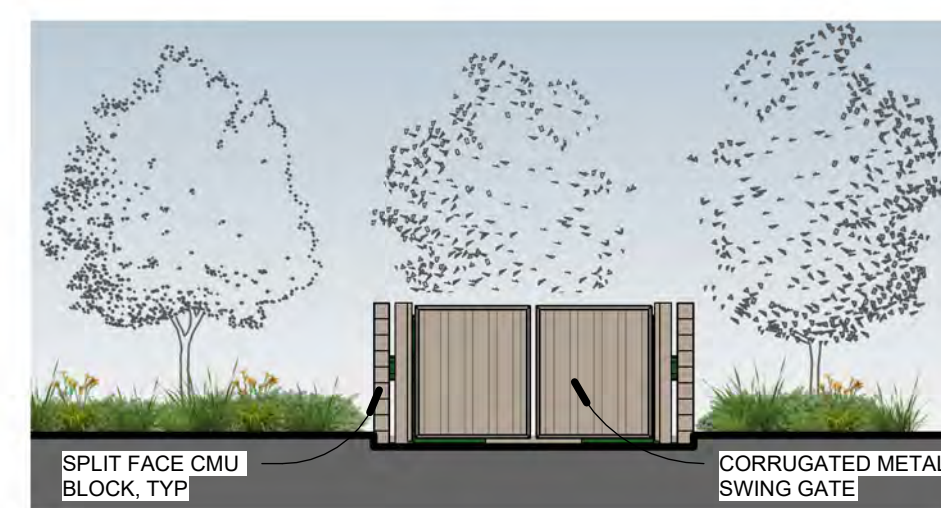


CONCEPTUAL NORTH ELEVATION



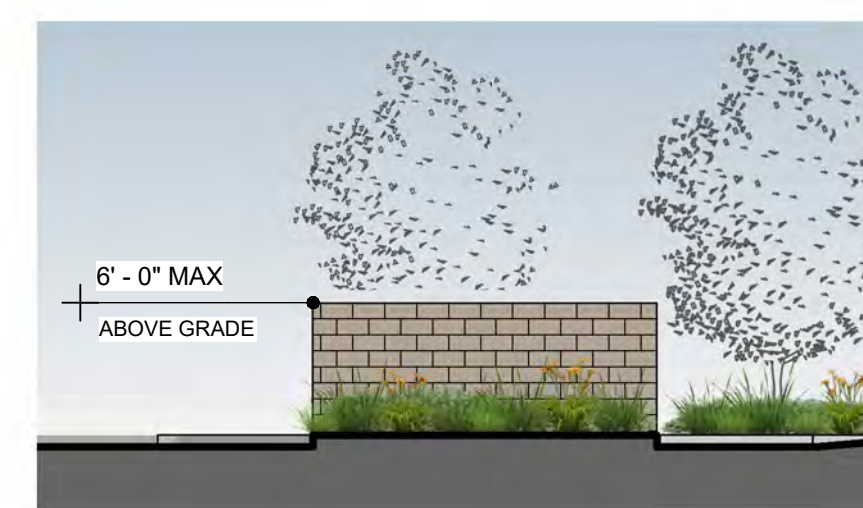
CONCEPTUAL WEST ELEVATION

SIGNAGE NOTE: 132' PARCEL FRONTAGE X 1.5 = 198 SQ FT ALLOWED FACING WESTWARD: LOGO & LETTERS TOTAL SIZE = 2.2 SQ FT



FRONT ELEVATION

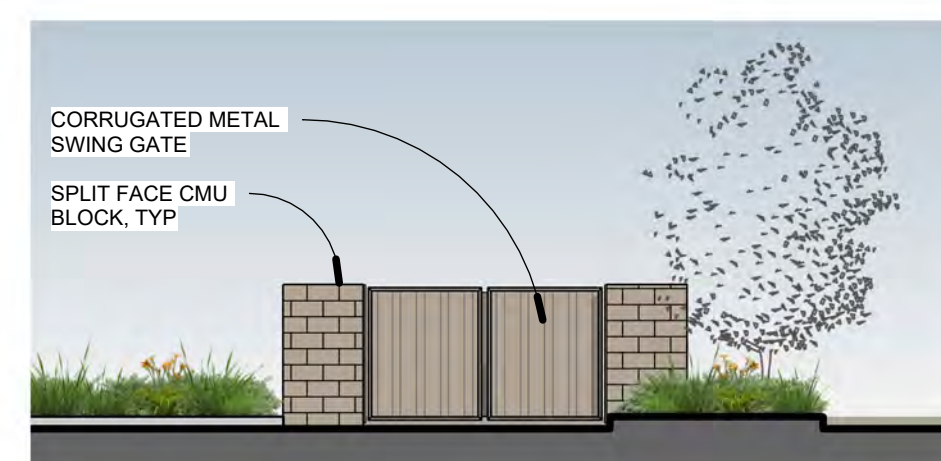
TRASH ENCLOSURE



SIDE, TYP

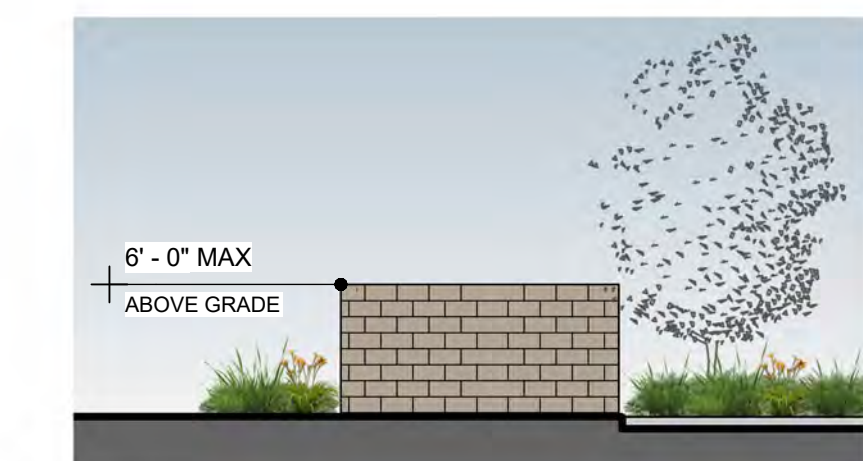


REAR

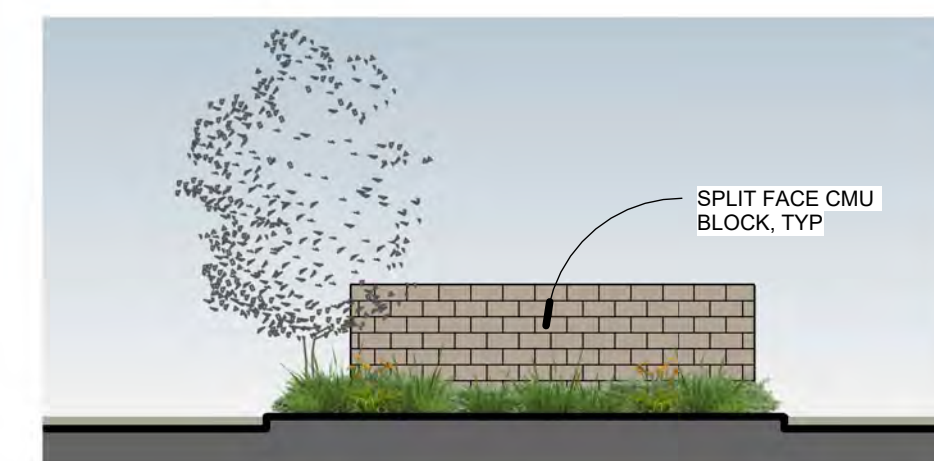


FRONT ELEVATION

GENERATOR ENCLOSURE



SIDE, TYP



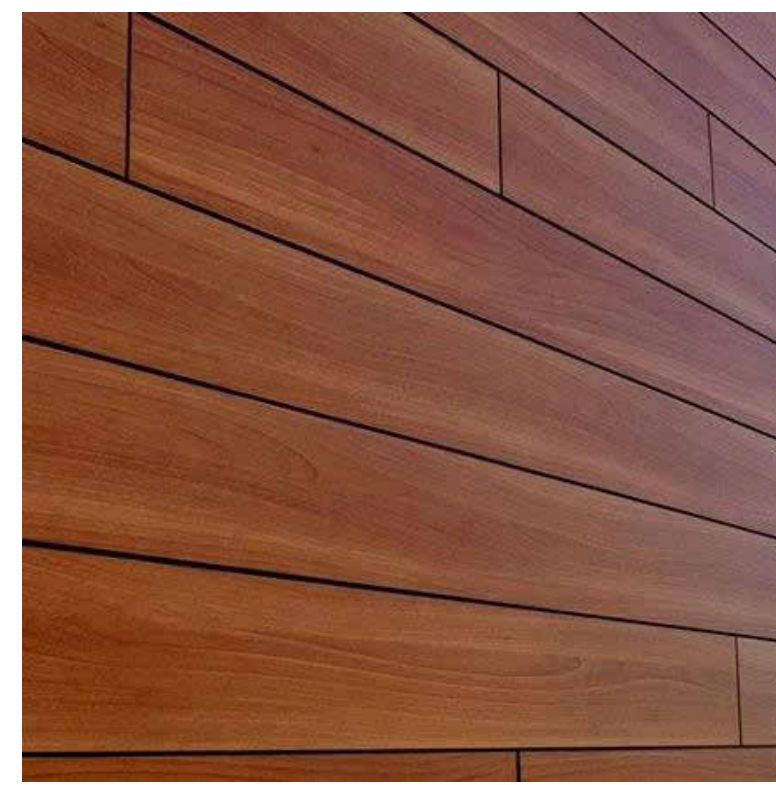
REAR



COLOR A
METAL SALES - CLASSIC GREEN



PLASTER SIDING
PAINTED



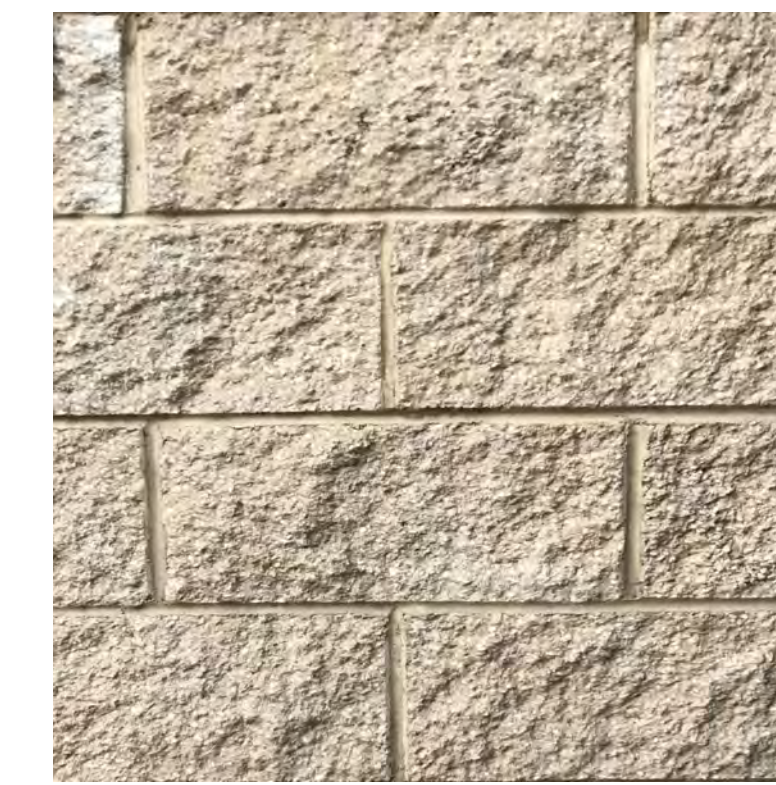
TRESPA PURA PANELS
TRESPA - ROMANTIC WALNUT



VERTICAL SEAM METAL ROOF
METAL SALES - CLASSIC GREEN



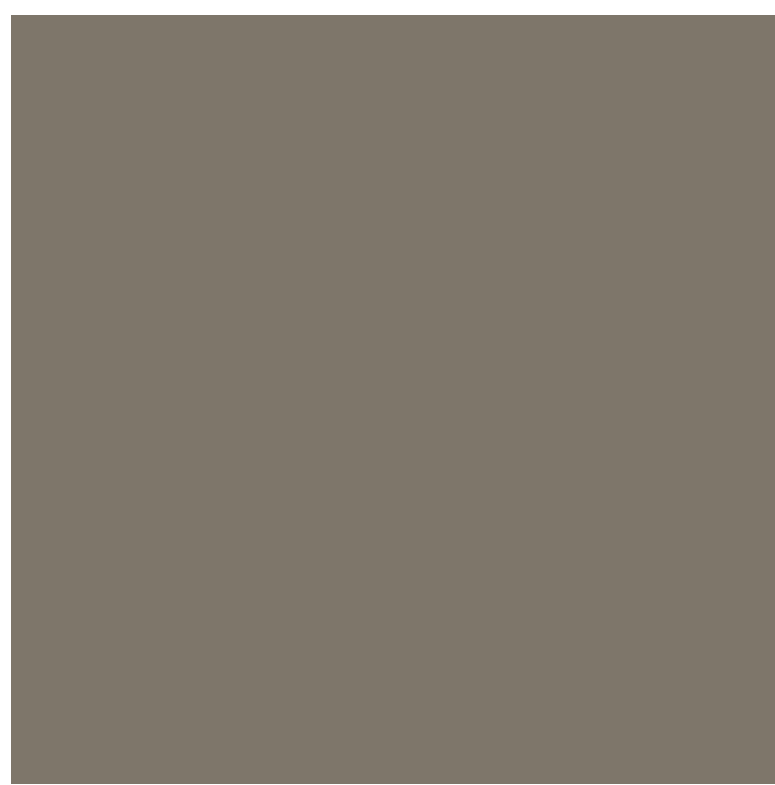
STOREFRONT GLAZING
ANODIZED ALUMINUM



SPLIT FACE CMU BLOCK
PAINTED (SITE SCREENING ONLY)



COLOR B
KELLY MOORE - TRANQUIL TAUPE



COLOR C
KELLY MOORE - BAT WING



CONCEPTUAL PERSPECTIVE - MAIN ENTRY

