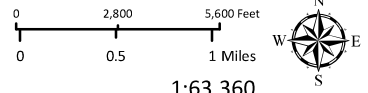


Sources: Esri, HERE, DeLorme, increment P Corp., NPS, NRCAn, Ordnance Survey, © OpenStreetMap contributors, USGS, NGA, NASA, CGIAR, N Robinson, NCEAS, NLS, OS, NMA, Geodatastyrelsen, Rijkswaterstaat, GSA, Geoland, FEMA, Intermap and the GIS user community

- Major Towns & Places
- Highways
- Major Roads



**OWNER: City of Ukiah**  
**APN: 180-110-12, 180-120-15 & 16**

1:63,360

LOCATION

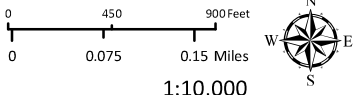
**THIS MAP AND DATA ARE PROVIDED WITHOUT WARRANTY OF ANY KIND.**  
 DO NOT USE THIS MAP TO DETERMINE LEGAL PROPERTY BOUNDARIES





Source: Esri, Maxar, Earthstar Geographics, and the GIS User Community, IGN, and the GIS User Community

- Highways (2017)
- Private Roads
- Public Roads
- Driveways/Unnamed Roads
- Railroads



**OWNER:** City of Ukiah  
**APN:** 180-110-12, 180-120-15 & 16

1:10,000

AERIAL IMAGERY

**THIS MAP AND DATA ARE PROVIDED WITHOUT WARRANTY OF ANY KIND.**  
 DO NOT USE THIS MAP TO DETERMINE LEGAL PROPERTY BOUNDARIES

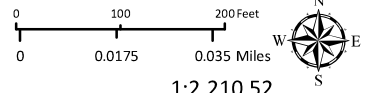




Source: Esri, Maxar, Earthstar Geographics, and the GIS User Community, IGN, and the GIS User Community

**OWNER: City of Ukiah**  
**APN: 180-110-12, 180-120-15 & 16**

- Highways (2017)     Railroads
- Public Roads
- Private Roads

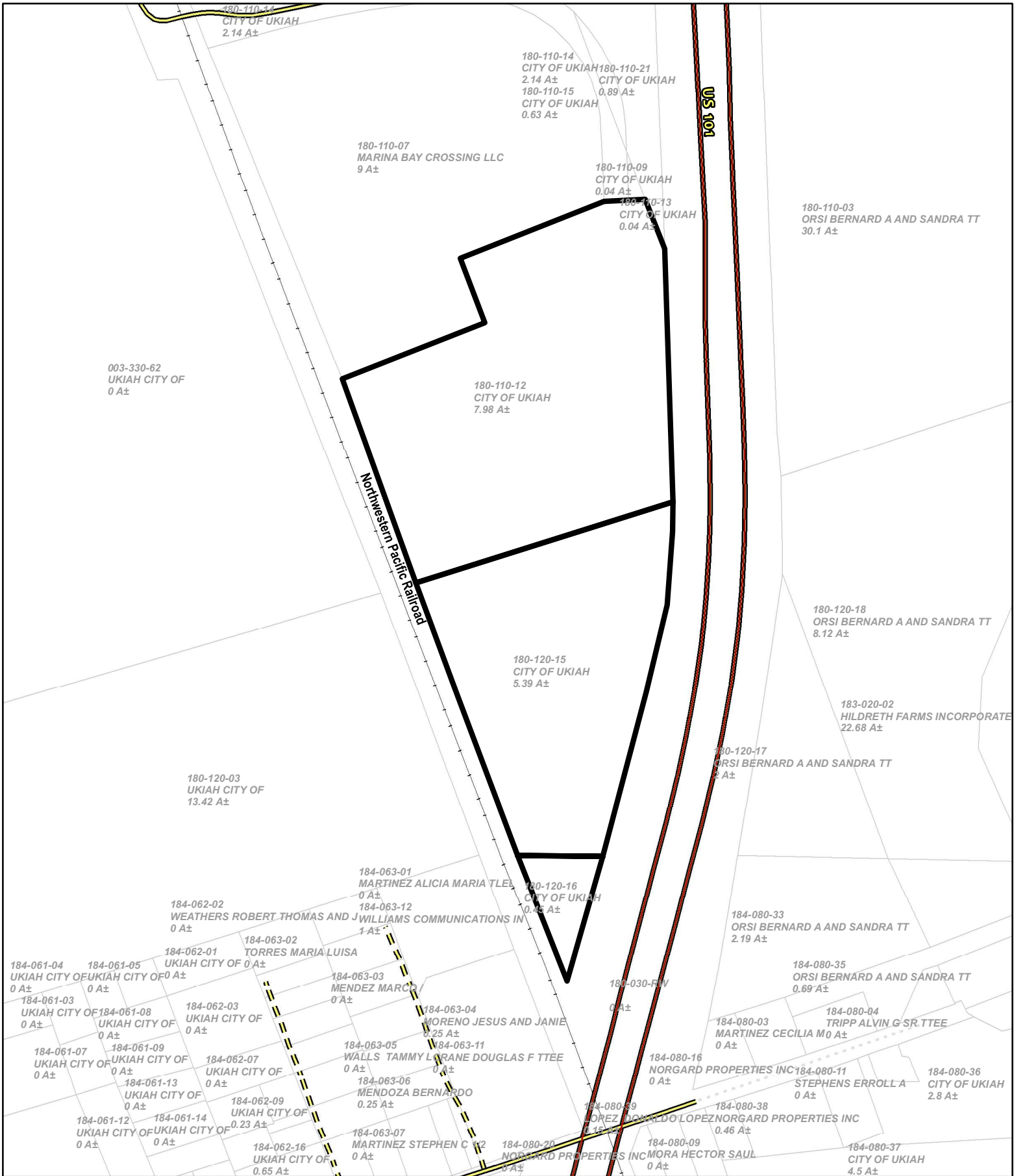


1:2,210.52

**AERIAL IMAGERY**

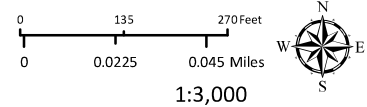
**THIS MAP AND DATA ARE PROVIDED WITHOUT WARRANTY OF ANY KIND.**  
 DO NOT USE THIS MAP TO DETERMINE LEGAL PROPERTY BOUNDARIES





**OWNER: City of Ukiah**  
**APN: 180-110-12, 180-120-15 & 16**

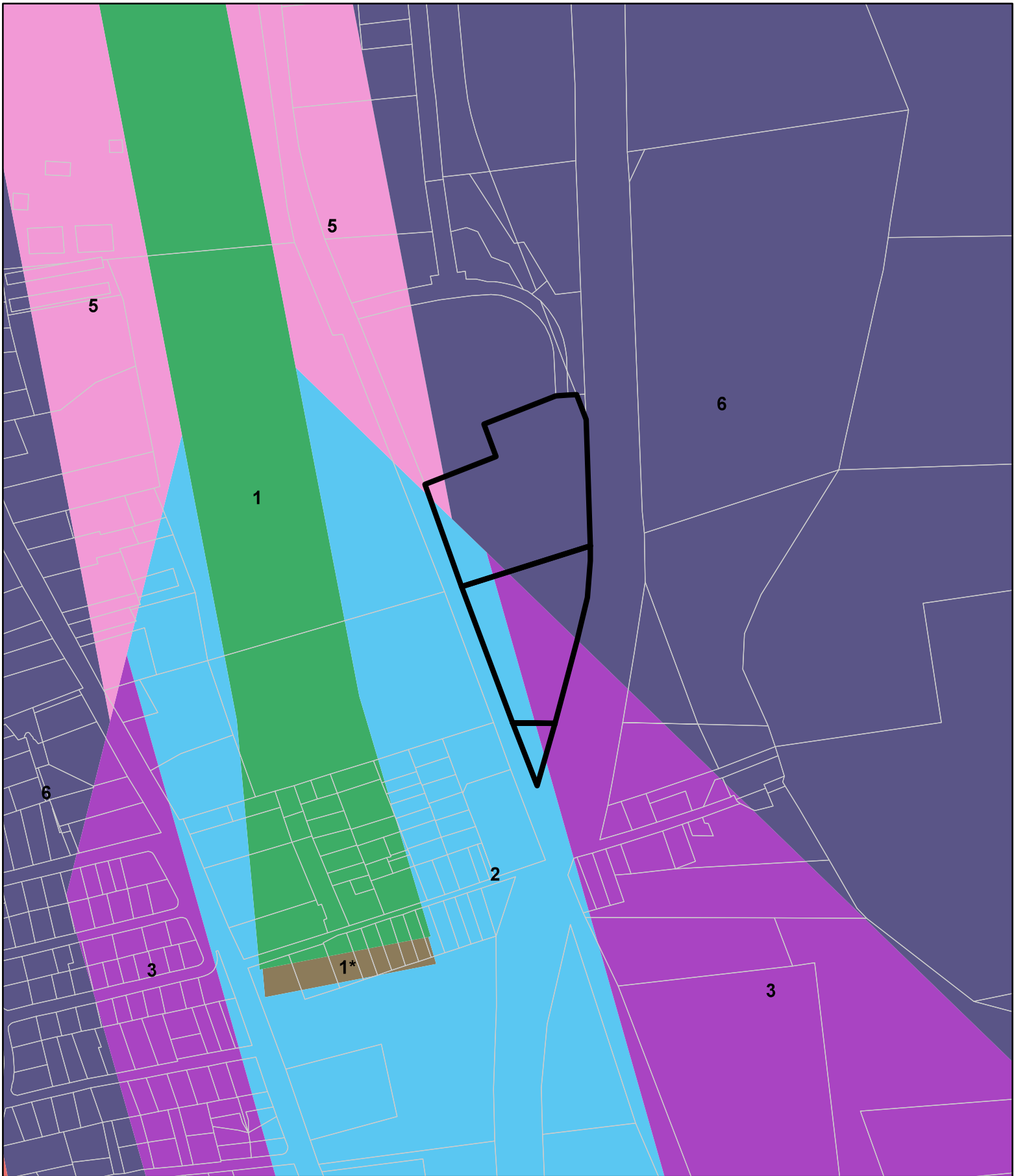
- Highways (2017)
- Public Roads
- Private Roads
- - - - - Driveways/Unnamed Roads
- +— Railroads
- Assessors Parcels



1:3,000

**ADJACENT PARCELS**

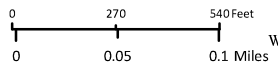
**THIS MAP AND DATA ARE PROVIDED WITHOUT WARRANTY OF ANY KIND.**  
 DO NOT USE THIS MAP TO DETERMINE LEGAL PROPERTY BOUNDARIES



Assessors Parcels

Ukiah Airport Zones 052021

ZONE

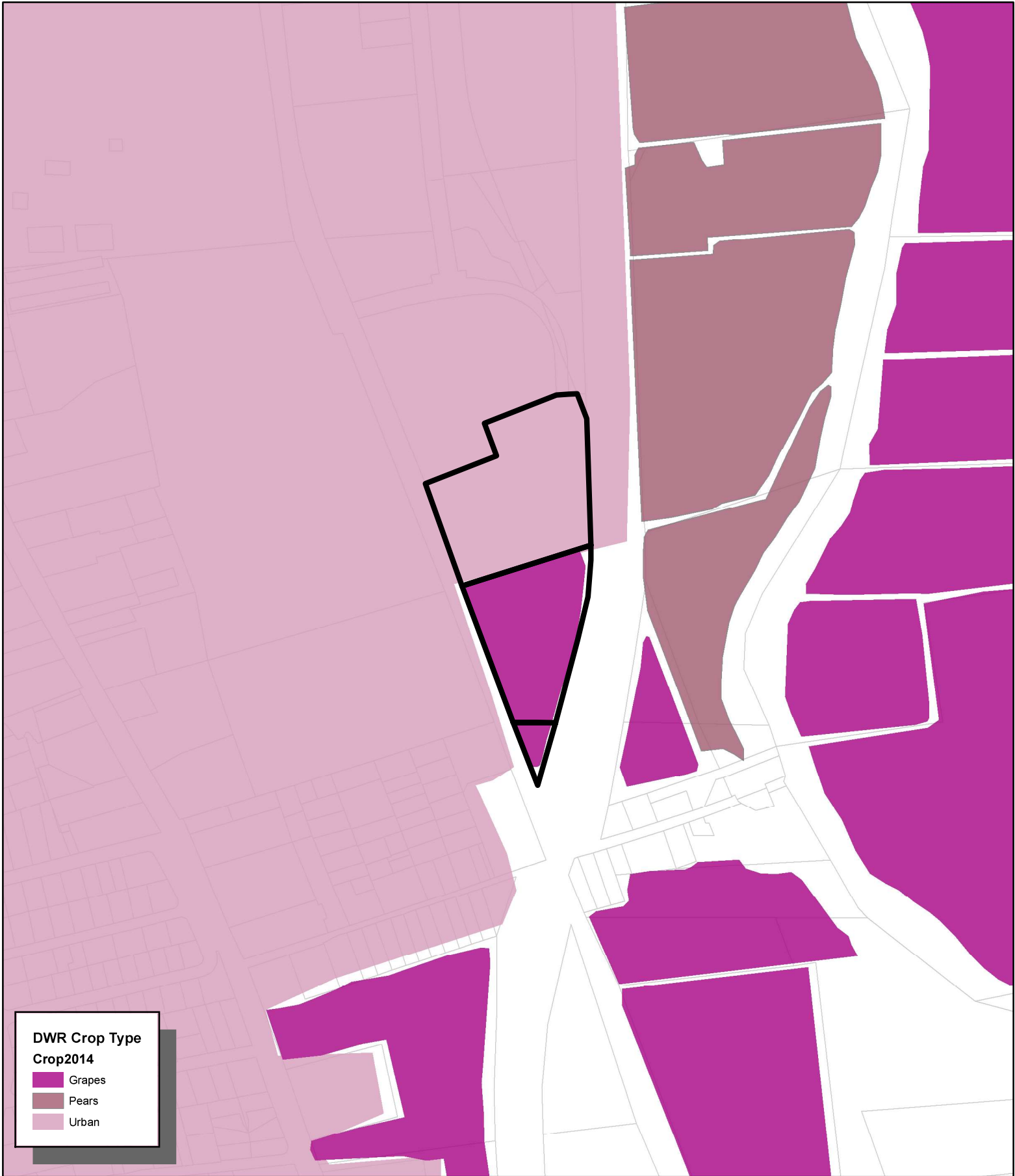


1:6,000

AIRPORT ZONES

**OWNER: City of Ukiah**  
**APN: 180-110-12, 180-120-15 & 16**

**THIS MAP AND DATA ARE PROVIDED WITHOUT WARRANTY OF ANY KIND.**  
 DO NOT USE THIS MAP TO DETERMINE LEGAL PROPERTY BOUNDARIES

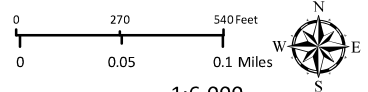


**DWR Crop Type  
Crop2014**

- Grapes
- Pears
- Urban

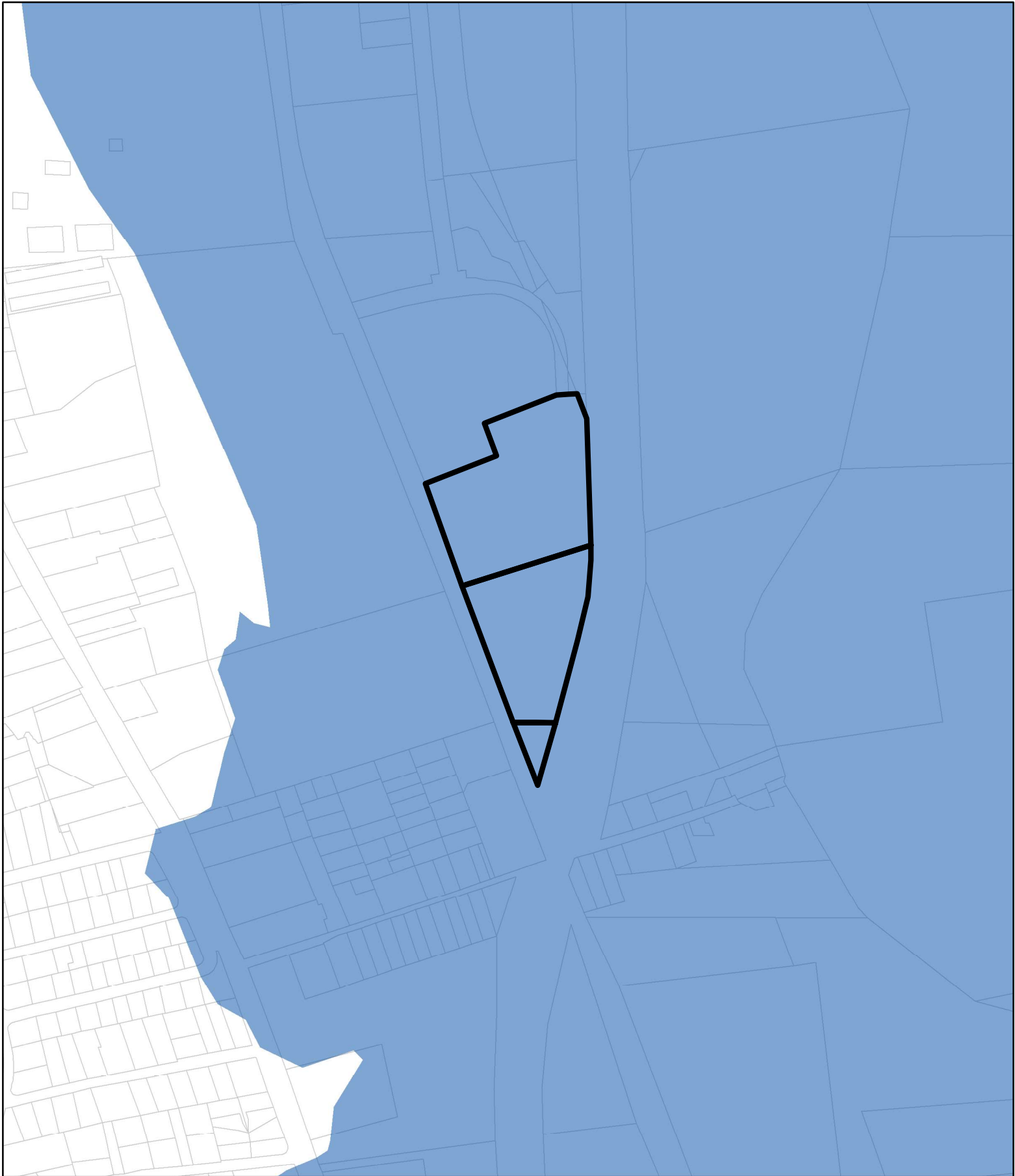
**OWNER: City of Ukiah**  
**APN: 180-110-12, 180-120-15 & 16**

Assessors Parcels





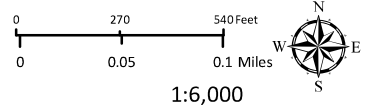
1:6,000

**CROP TYPES**



**OWNER: City of Ukiah**  
**APN: 180-110-12, 180-120-15 & 16**

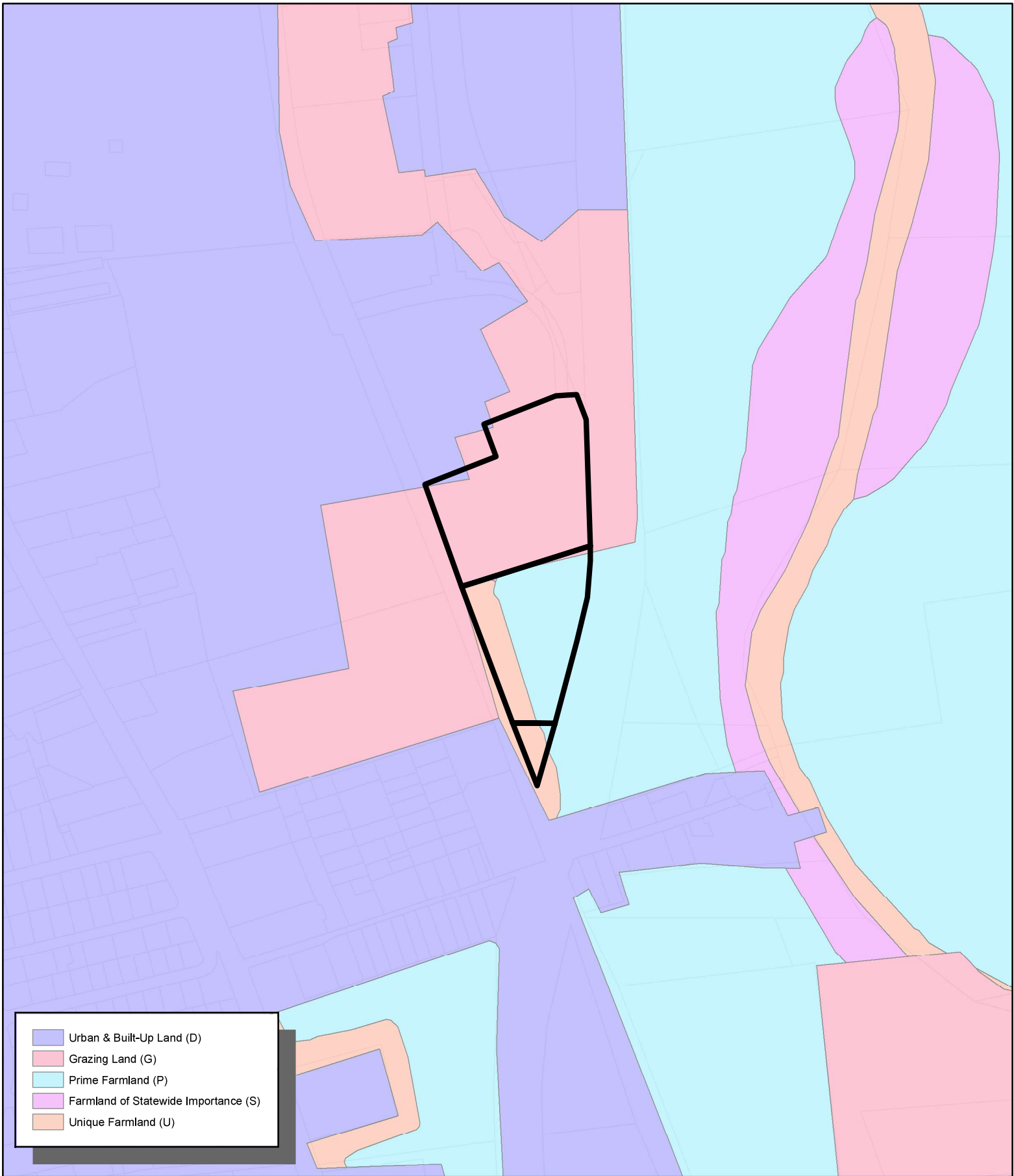
-  Estimated Inundation Zones
-  Assessor's Parcels



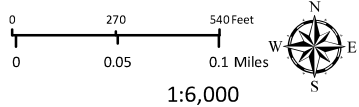
1:6,000

### DAM INUNDATION ZONE

**THIS MAP AND DATA ARE PROVIDED WITHOUT WARRANTY OF ANY KIND.**  
**DO NOT USE THIS MAP TO DETERMINE LEGAL PROPERTY BOUNDARIES**



- Urban & Built-Up Land (D)
- Grazing Land (G)
- Prime Farmland (P)
- Farmland of Statewide Importance (S)
- Unique Farmland (U)



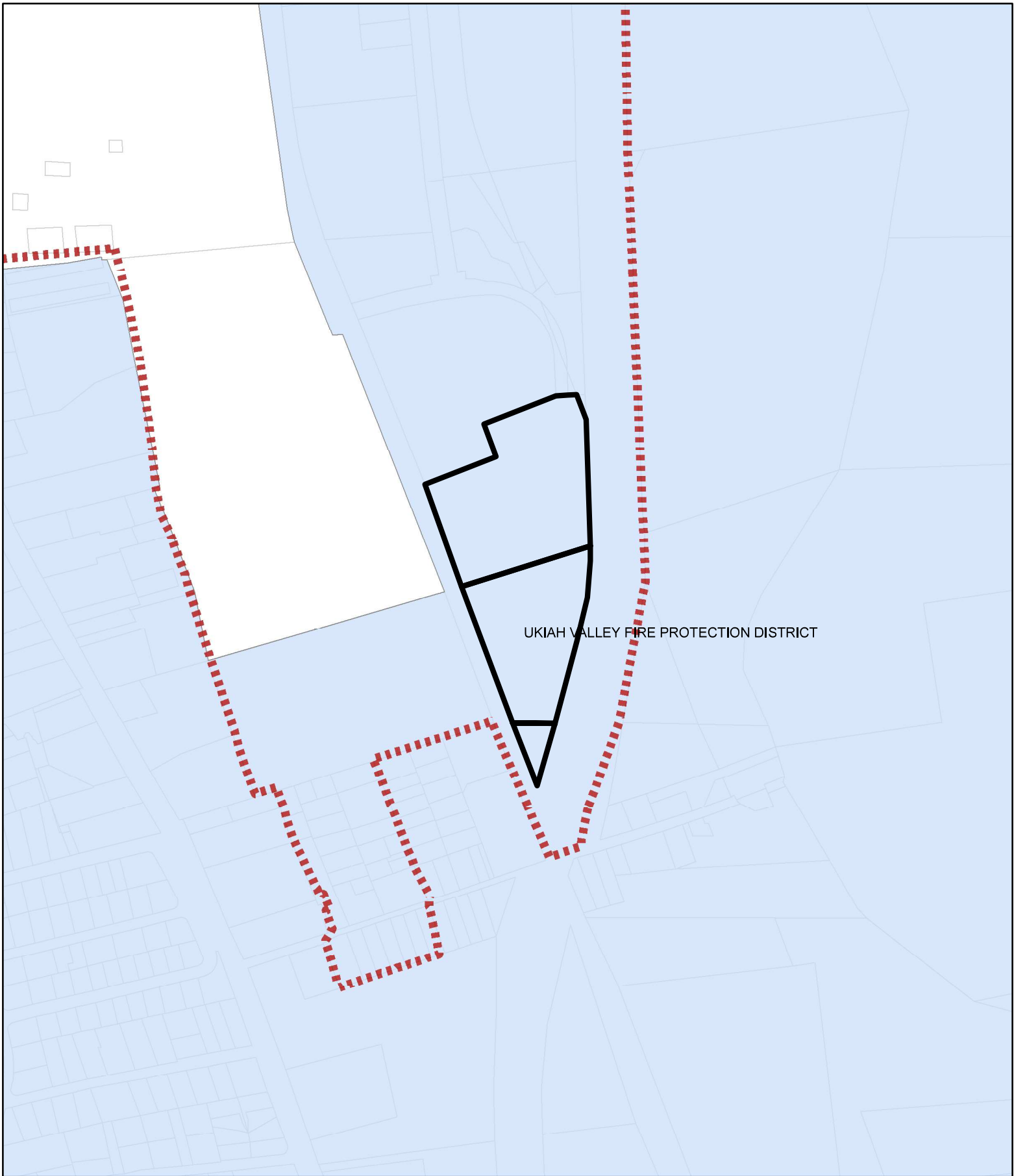
**OWNER: City of Ukiah**  
**APN: 180-110-12, 180-120-15 & 16**

Assessors Parcels

**FARMLAND CLASSIFICATIONS**

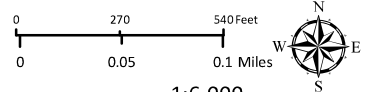
**THIS MAP AND DATA ARE PROVIDED WITHOUT WARRANTY OF ANY KIND.**  
 DO NOT USE THIS MAP TO DETERMINE LEGAL PROPERTY BOUNDARIES





**OWNER: City of Ukiah**  
**APN: 180-110-12, 180-120-15 & 16**

 County Fire Districts  
 Assessors Parcels

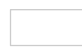



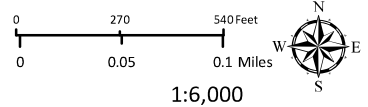
1:6,000  
**FIRE HAZARD ZONES & RESPONSIBILITY AREAS**  
STATE RESPONSIBILITY AREA

**THIS MAP AND DATA ARE PROVIDED WITHOUT WARRANTY OF ANY KIND.**  
DO NOT USE THIS MAP TO DETERMINE LEGAL PROPERTY BOUNDARIES



**OWNER: City of Ukiah**  
**APN: 180-110-12, 180-120-15 & 16**

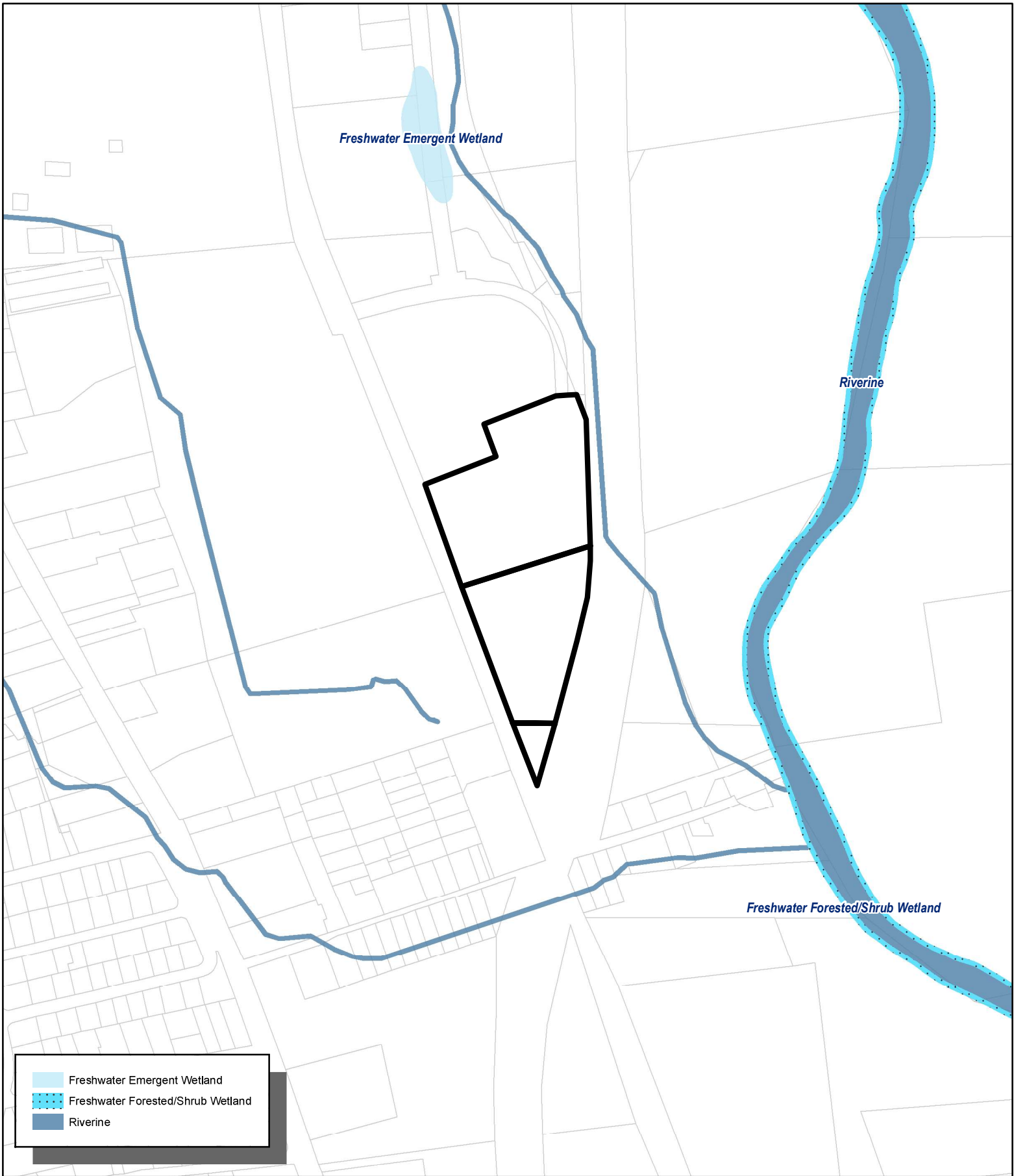
 Assessor's Parcels  
 UVAP Boundary




### UKIAH VALLEY AREA PLAN

**THIS MAP AND DATA ARE PROVIDED WITHOUT WARRANTY OF ANY KIND.**  
**DO NOT USE THIS MAP TO DETERMINE LEGAL PROPERTY BOUNDARIES**





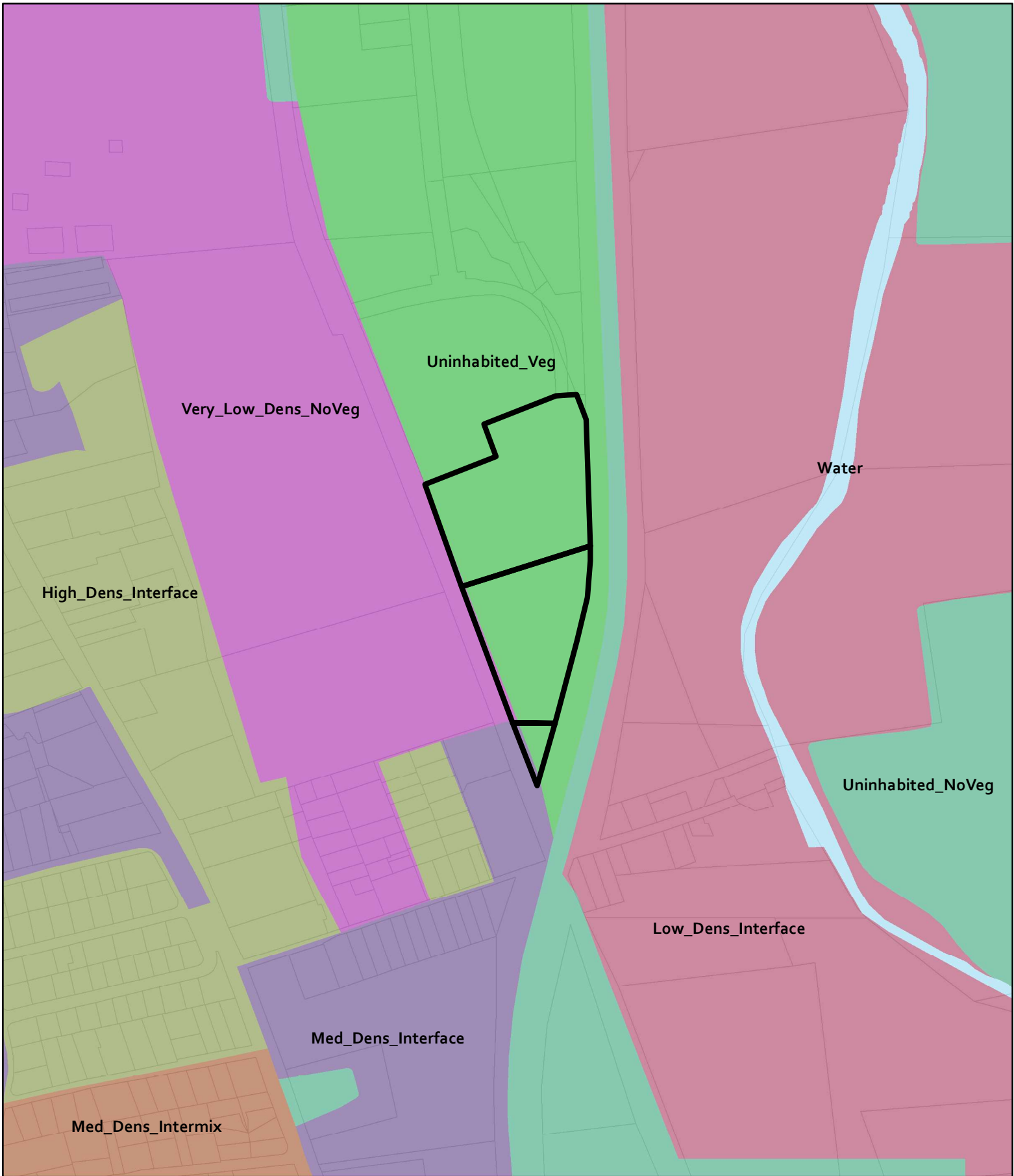
**OWNER: City of Ukiah**  
**APN: 180-110-12, 180-120-15 & 16**

 Assessors Parcels


1:6,000

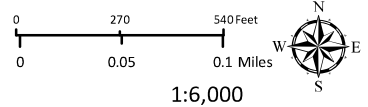
**WETLANDS**

**THIS MAP AND DATA ARE PROVIDED WITHOUT WARRANTY OF ANY KIND.**  
 DO NOT USE THIS MAP TO DETERMINE LEGAL PROPERTY BOUNDARIES



**OWNER: City of Ukiah**  
**APN: 180-110-12, 180-120-15 & 16**

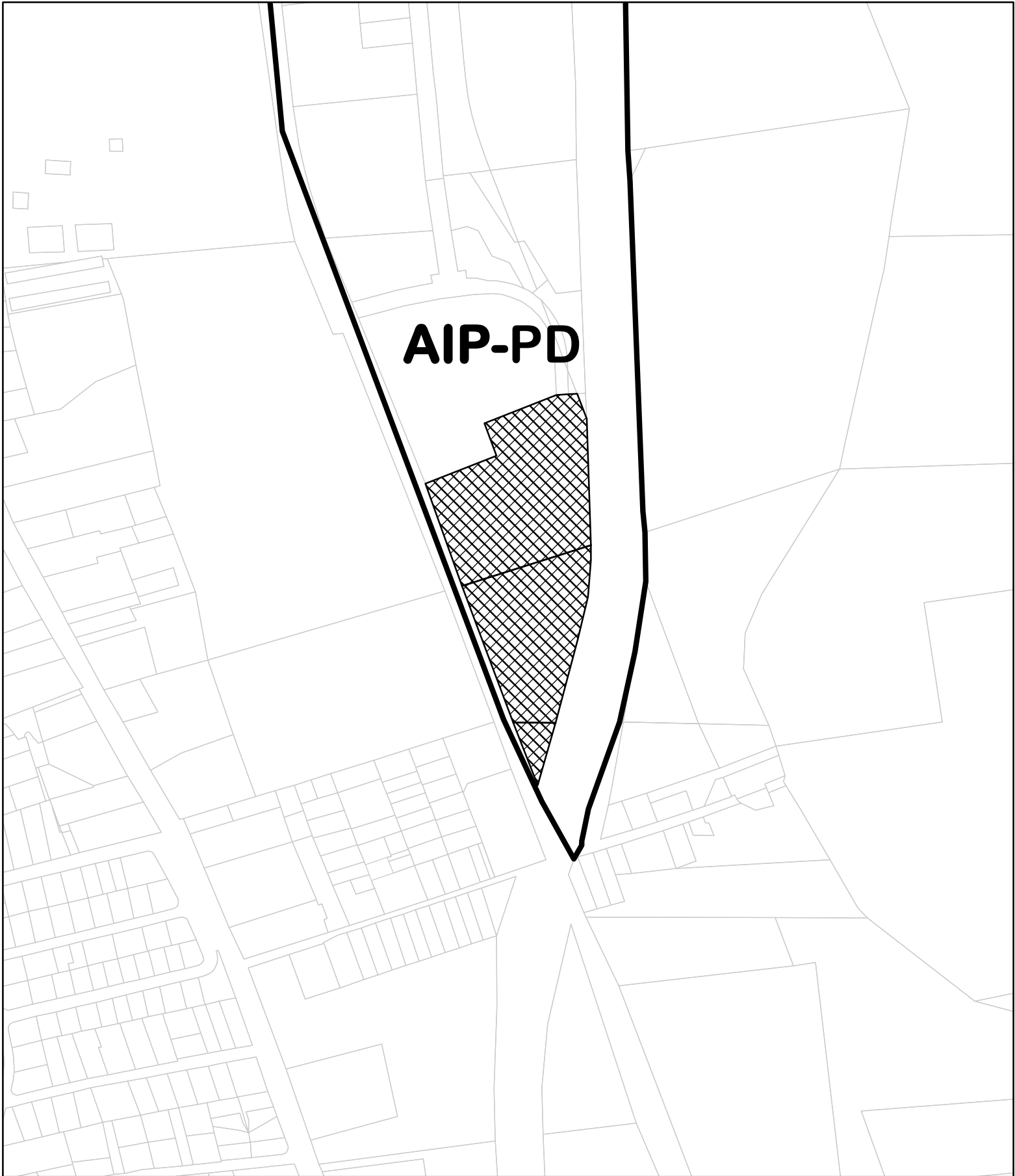
 Assessors Parcels




**WILDLAND URBAN INTERFACE**

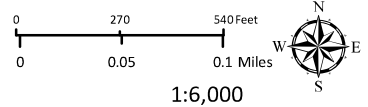
**THIS MAP AND DATA ARE PROVIDED WITHOUT WARRANTY OF ANY KIND.**  
 DO NOT USE THIS MAP TO DETERMINE LEGAL PROPERTY BOUNDARIES





**OWNER: City of Ukiah**  
**APN: 180-110-12, 180-120-15 & 16**

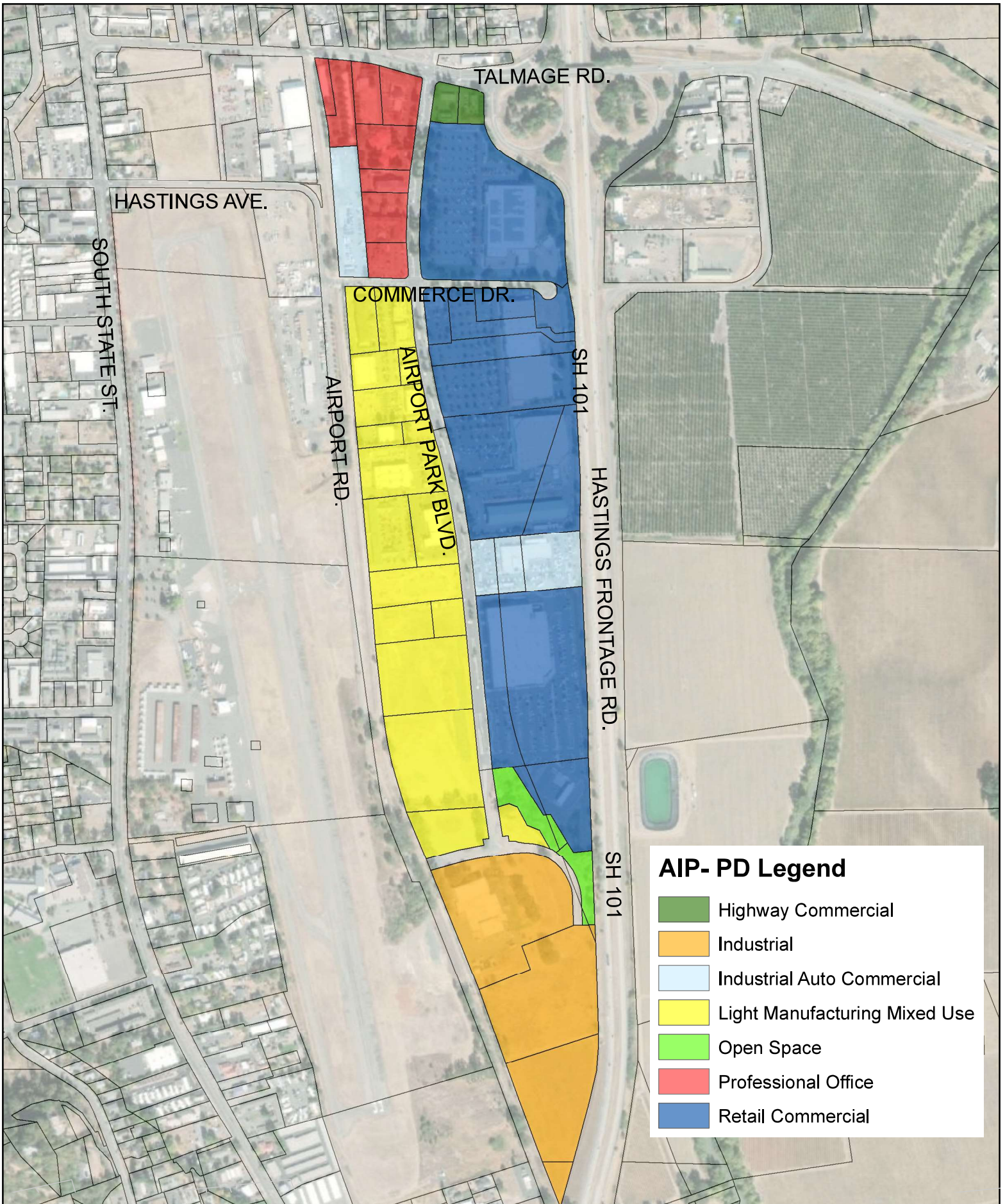
 Assessor's Parcels



1:6,000

**ZONING**

**THIS MAP AND DATA ARE PROVIDED WITHOUT WARRANTY OF ANY KIND.**  
**DO NOT USE THIS MAP TO DETERMINE LEGAL PROPERTY BOUNDARIES**



### AIP- PD Legend

- Highway Commercial
- Industrial
- Industrial Auto Commercial
- Light Manufacturing Mixed Use
- Open Space
- Professional Office
- Retail Commercial

**OWNER: City of Ukiah**  
**APN: 180-110-12, 180-120-15 & 16**

Assessors Parcels



AIP- PD Designations