



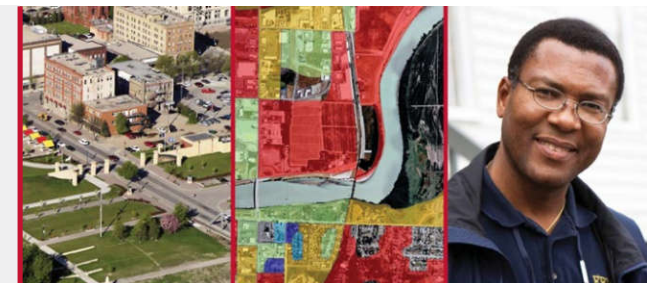
FEMA

Mendocino County Map Revision (Orrs, Gibson, Doolin and Zone A) Updates

Consultation Coordination Officer (CCO) Meeting

August 16, 2022
10-11:30 PT

RiskMAP
Increasing Resilience Together



Welcome and Introductions

FEMA Region 9

Patrick Clancey – Project Manager

Nancy Steinberger – Senior Engineer

Edie Lohmann – NFIP Insurance Specialist

Serena Cheung – Floodplain Management Specialist

Adam D. Lizarraga – NFIP Regional Liaison, Region 9

California Department of Water Resources

Kelly Soule – State NFIP Coordinator

Michael Mierzwa – State Floodplain Manager

MD Haque – State Floodplain Mapping Lead

Production and Technical Services (PTS) contractor

Brock Remus – Project Manager

Raj Rachamalla – Project Engineer (Doolin Creek)

Sravan Krovidi – Project Engineer (Orrs and Gibson Creeks)

Andrea Elkin – Project Scientist

Agenda

- Purpose of the Meeting
- Study Scope
- Preliminary Mapping
- Post-Preliminary Processing / Schedule
- Comments and Appeals
- Insurance & Ordinances
- Risk Communication & Resources
- Next Steps
- Contacts & Questions



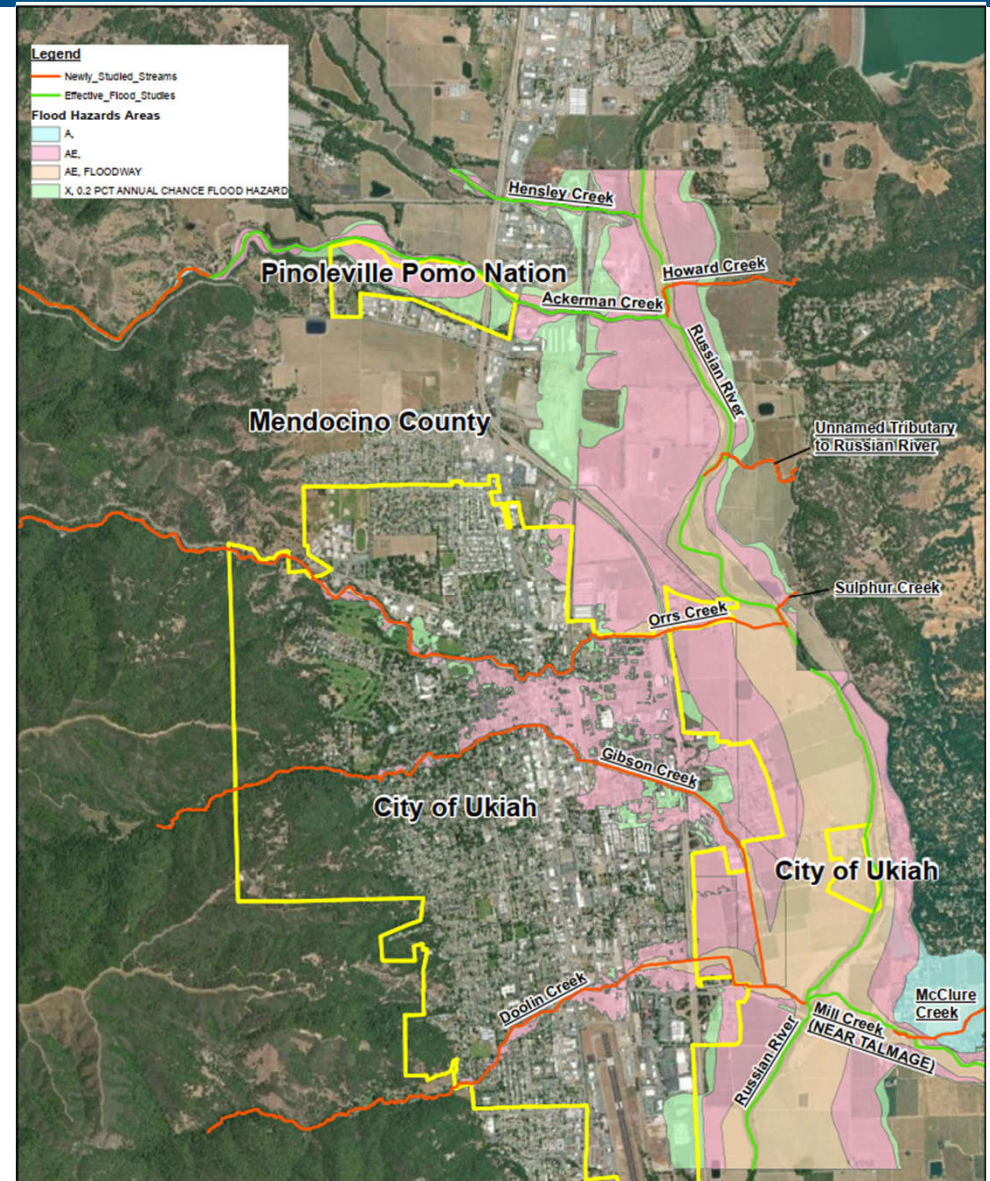
Goals for the Meeting

- Answer Questions
- Build Partnership
- Explain Due Process
- Foster Resiliency
- Support Community Outreach
- Confirm Responsibilities of the Affected NFIP Communities are understood



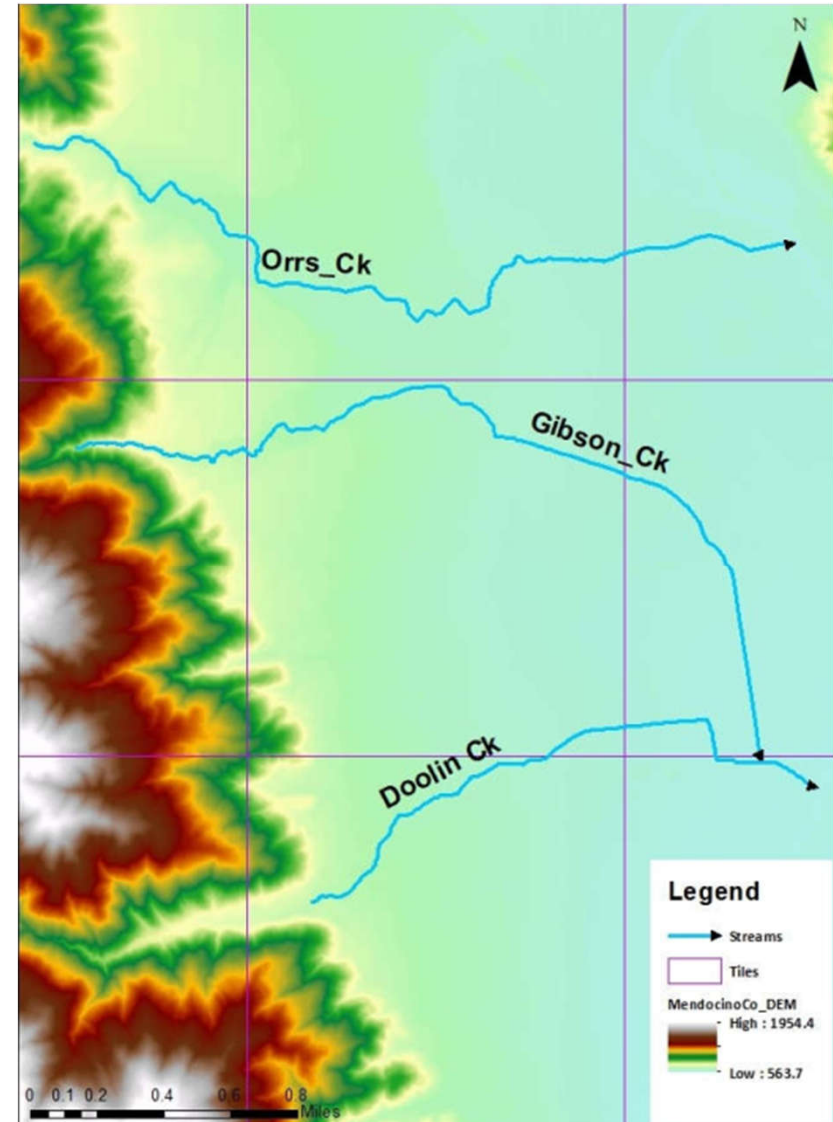
Study Engineering Scope – Zone AE Updates

- Impacted Communities:
 - Mendocino County
 - City of Ukiah
- Zone AE Updated Flooding Sources
 - Doolin Creek
 - Gibson Creek
 - Orrs Creek



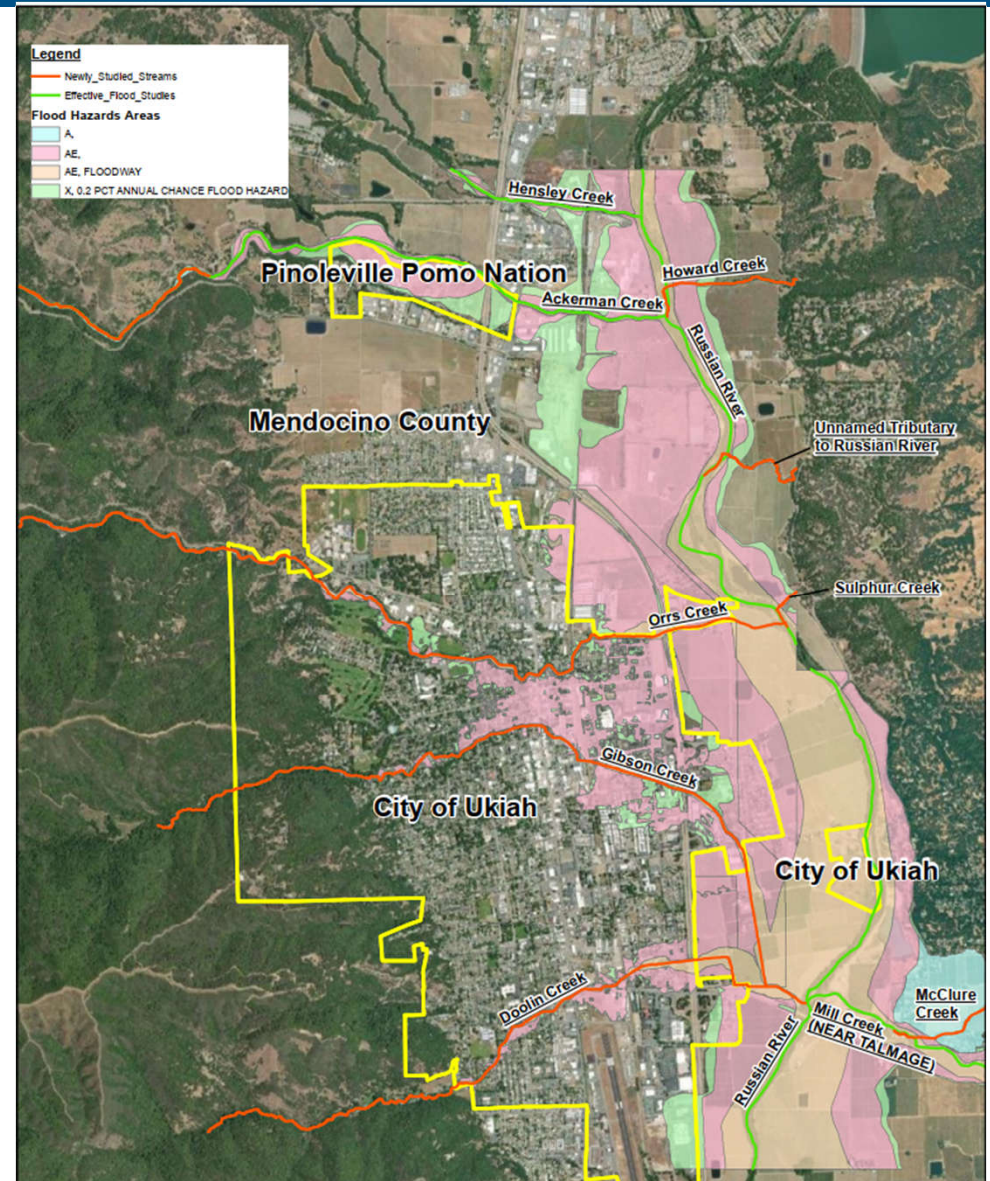
Study Engineering Scope – Zone AE Updates

- Zone AE Updated Methodology
 - Doolin, Gibson, and Orrs all used HEC RAS 5.0.7 1-D steady state analysis through entire reaches.
 - Orrs and Gibson Creeks presented comingling within overbank areas from approximately 1000 ft upstream of North Bush Street to confluence of Russian River.
 - 2-D analysis completed in these areas to correctly capture/model.
 - Models calculated the 10%, 4%, 2%, 1%, 1%+, 1%- and 0.2% annual chance exceedance events.



Study Engineering Scope – Zone A Updates

- Impacted Communities:
 - Mendocino County
 - City of Ukiah
- Zone A Updated Flooding Sources
 - Ackerman Creek
 - Hensley Creek
 - Howard Creek
 - Doolin Creek (Upstream Section)
 - Gibson Creek (Upstream Section)
 - Mill Creek (Near Talmage)
 - McClure Creek
 - Orrs Creek (Upstream Section)
 - Sulphur Creek
 - Unnamed Tributary to Russian River

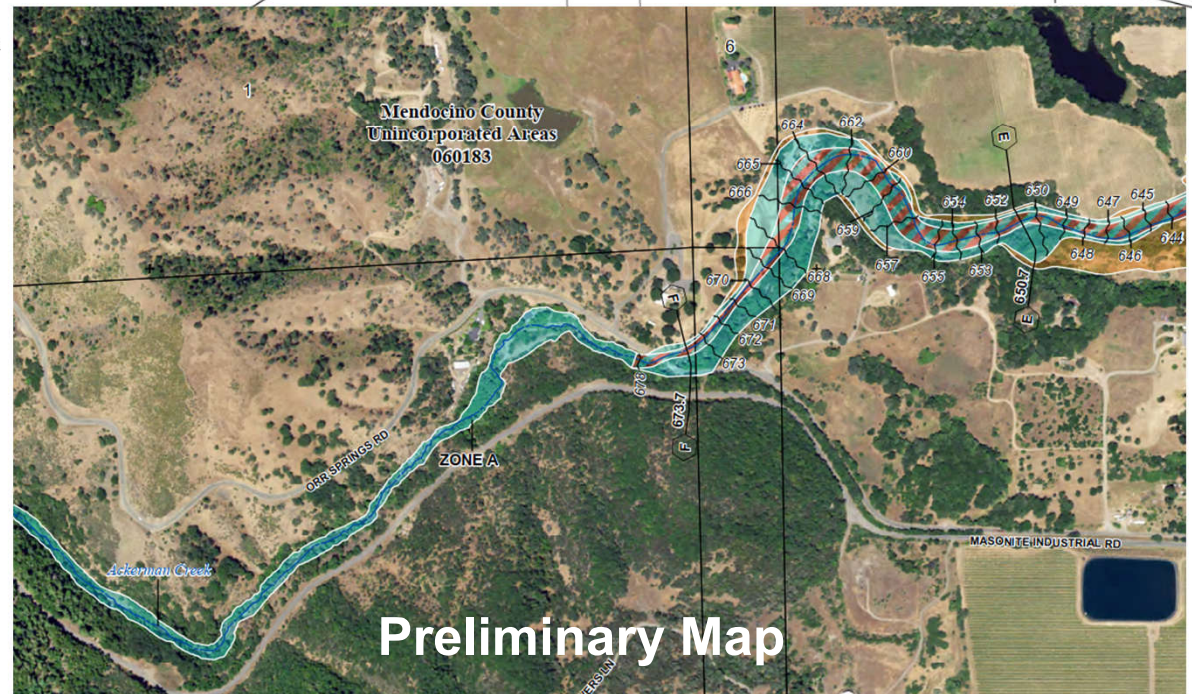
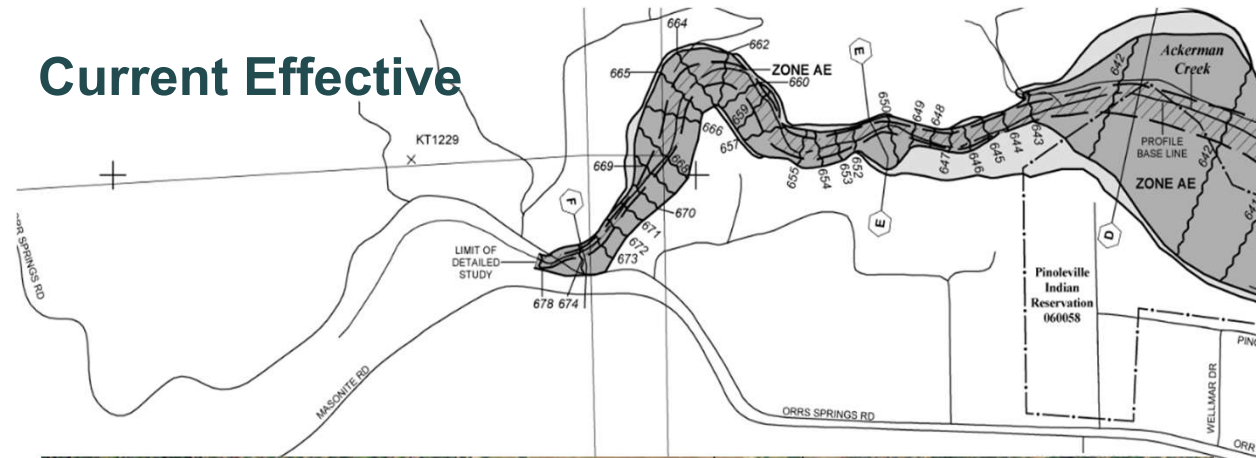


Study Engineering Scope – Zone A Updates

■ Zone A Updated Methodology

- Updated modeling was part of entire Russian River HUC-8 analysis utilizing HEC-RAS 5.
- Models calculated the 10%, 4%, 2%, 1%, 1%+, 1%- and 0.2% annual chance exceedance events.
- All prior non-studied reaches in project footprint were updated/added.

Current Effective



Preliminary Map

Study Mapping Scope

■ Updated Flood Insurance Study (FIS)

- Floodway Data Tables (FDTs) and profiles have been generated for PMR studies
- FIRM database updated to include spatial changes as well as attribution of engineering values

FLOOD INSURANCE STUDY FEDERAL EMERGENCY MANAGEMENT AGENCY

VOLUME 1 OF 4



MENDOCINO COUNTY, CALIFORNIA AND INCORPORATED AREAS

COMMUNITY NAME	COMMUNITY NUMBER
FORT BRAGG, CITY OF	060184
MENDOCINO COUNTY UNINCORPORATED AREAS	060183
POINT ARENA, CITY OF	060185
UKIAH, CITY OF	060186
WILLITS, CITY OF	060187

*No Special Flood Hazard Areas

TRIBAL NATION**	TRIBAL NATION**
CAHTO TRIBE OF LAYTONVILLE RANCHERIA	PINOLEVILLE POMO NATION
COYOTE VALLEY BAND OF POMO INDIANS	POTTER VALLEY TRIBE
GUIDVILLE RANCHERIA	REDWOOD VALLEY LITTLE RIVER BAND OF POMO INDIANS
HOPLAND BAND OF POMO INDIANS	ROUND VALLEY INDIAN TRIBES
MANCHESTER BAND OF POMO INDIANS	SHERWOOD VALLEY RANCHERIA OF POMO INDIANS

**Federally Recognized Tribal Nations

PRELIMINARY: APRIL 29, 2022

REVISED: TBD

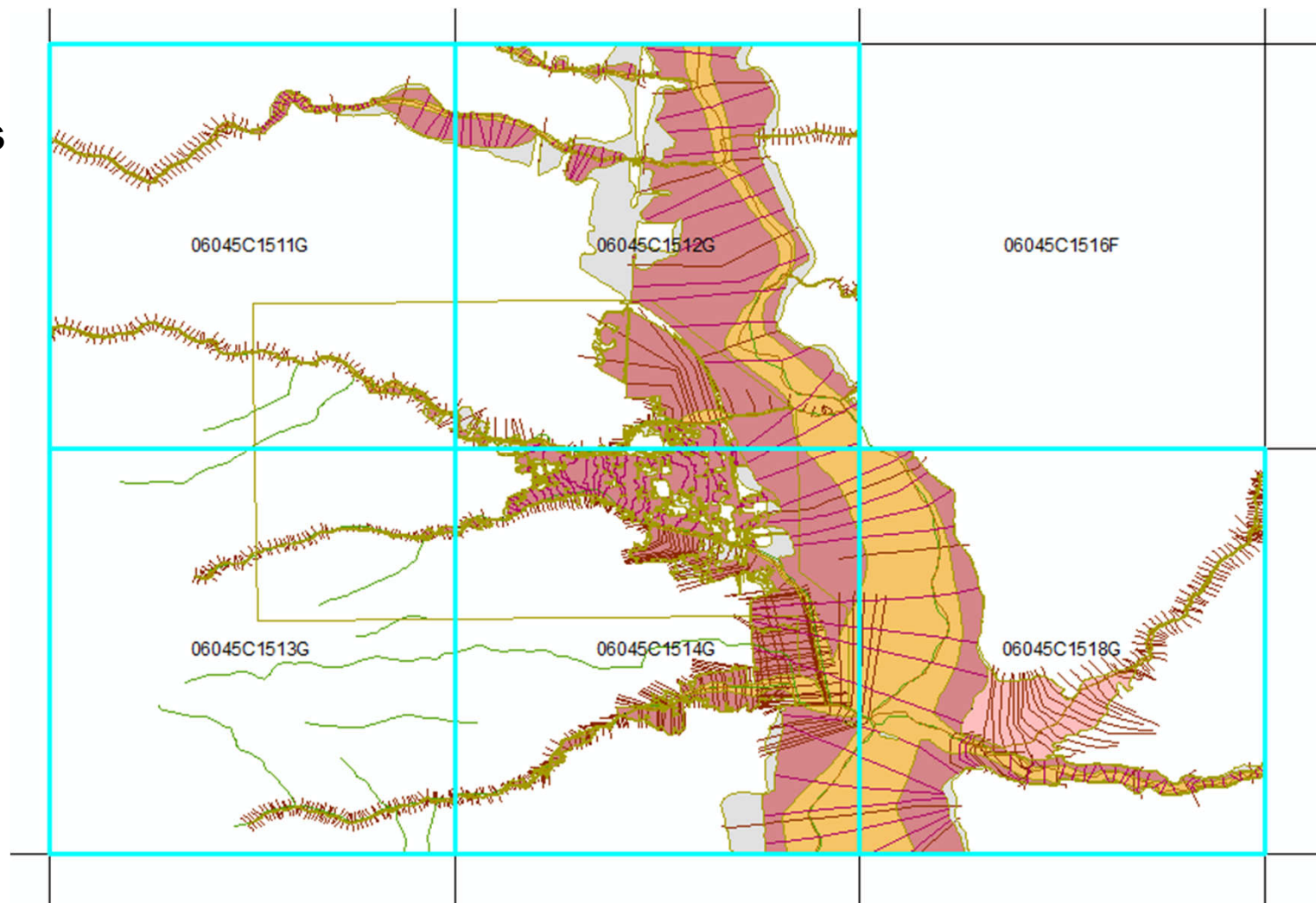
FLOOD INSURANCE STUDY NUMBER
06045CV001D
Version Number 2.6.4.6



FEMA

Study Mapping Scope

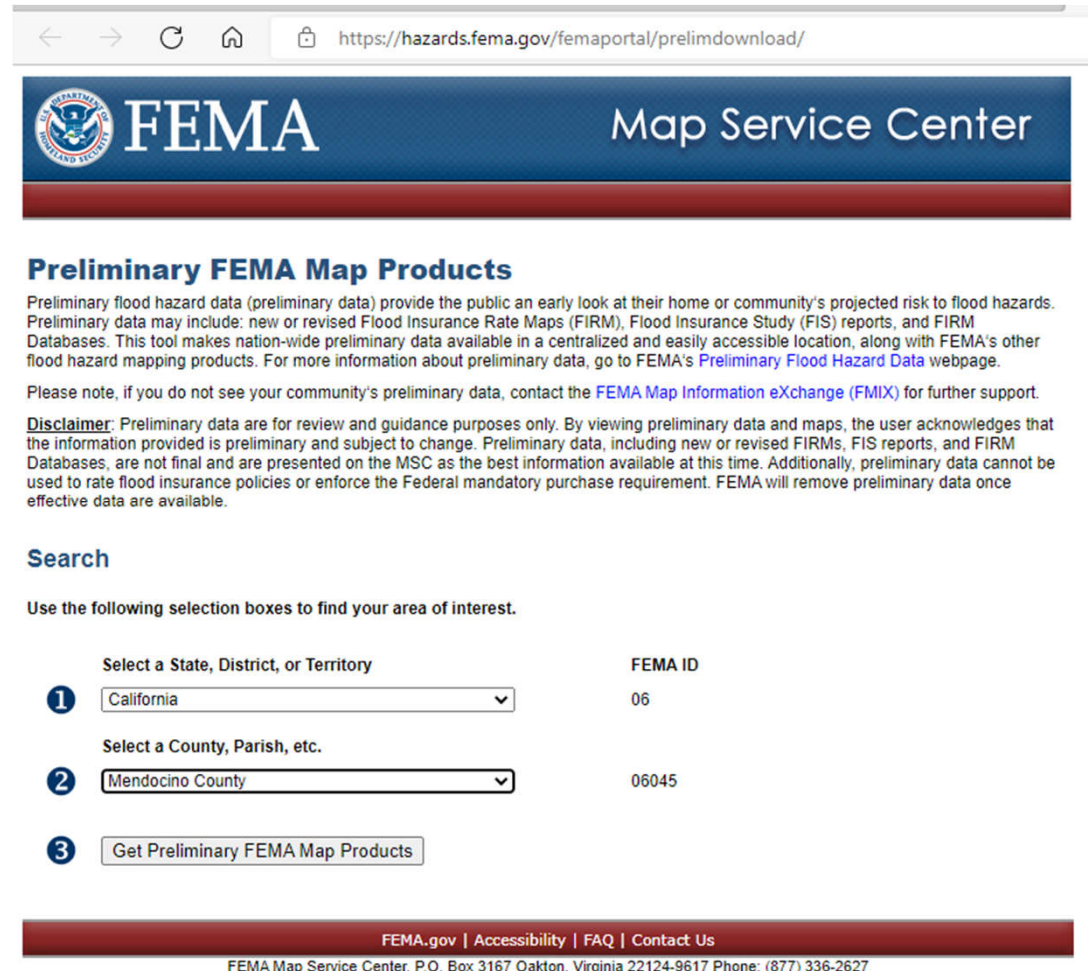
- **5 Printed Panels**



Preliminary Products (June 10, 2022)


- Preliminary Flood Insurance Rate Map (FIRM) Panels
- Preliminary Flood Insurance Study (FIS)
- Preliminary FIRM Database (Shapefiles)
- Preliminary products available at:

<https://hazards.fema.gov/femaportal/prelimdownload/>



The screenshot shows the FEMA Map Service Center website. The header includes the FEMA logo and the text "Map Service Center". Below the header, there is a section titled "Preliminary FEMA Map Products" with a brief description of the data and a disclaimer. A search section follows, with the instruction "Use the following selection boxes to find your area of interest." The search interface includes three numbered steps: 1. Select a State, District, or Territory (California selected), 2. Select a County, Parish, etc. (Mendocino County selected), and 3. Get Preliminary FEMA Map Products. The FEMA ID 06 and 06045 are displayed next to the selection boxes. The footer contains links for FEMA.gov, Accessibility, FAQ, and Contact Us, along with the address and phone number of the FEMA Map Service Center.

← → ↻ 🏠 🔒 <https://hazards.fema.gov/femaportal/prelimdownload/>

 **FEMA** Map Service Center

Preliminary FEMA Map Products

Preliminary flood hazard data (preliminary data) provide the public an early look at their home or community's projected risk to flood hazards. Preliminary data may include: new or revised Flood Insurance Rate Maps (FIRM), Flood Insurance Study (FIS) reports, and FIRM Databases. This tool makes nation-wide preliminary data available in a centralized and easily accessible location, along with FEMA's other flood hazard mapping products. For more information about preliminary data, go to FEMA's [Preliminary Flood Hazard Data](#) webpage.

Please note, if you do not see your community's preliminary data, contact the [FEMA Map Information eXchange \(FMIX\)](#) for further support.

Disclaimer: Preliminary data are for review and guidance purposes only. By viewing preliminary data and maps, the user acknowledges that the information provided is preliminary and subject to change. Preliminary data, including new or revised FIRMs, FIS reports, and FIRM Databases, are not final and are presented on the MSC as the best information available at this time. Additionally, preliminary data cannot be used to rate flood insurance policies or enforce the Federal mandatory purchase requirement. FEMA will remove preliminary data once effective data are available.

Search

Use the following selection boxes to find your area of interest.

1	Select a State, District, or Territory	FEMA ID
	<input type="text" value="California"/>	06
2	Select a County, Parish, etc.	
	<input type="text" value="Mendocino County"/>	06045
3	<input type="button" value="Get Preliminary FEMA Map Products"/>	

FEMA.gov | Accessibility | FAQ | Contact Us
FEMA Map Service Center, P.O. Box 3167 Oakton, Virginia 22124-9617 Phone: (877) 336-2627

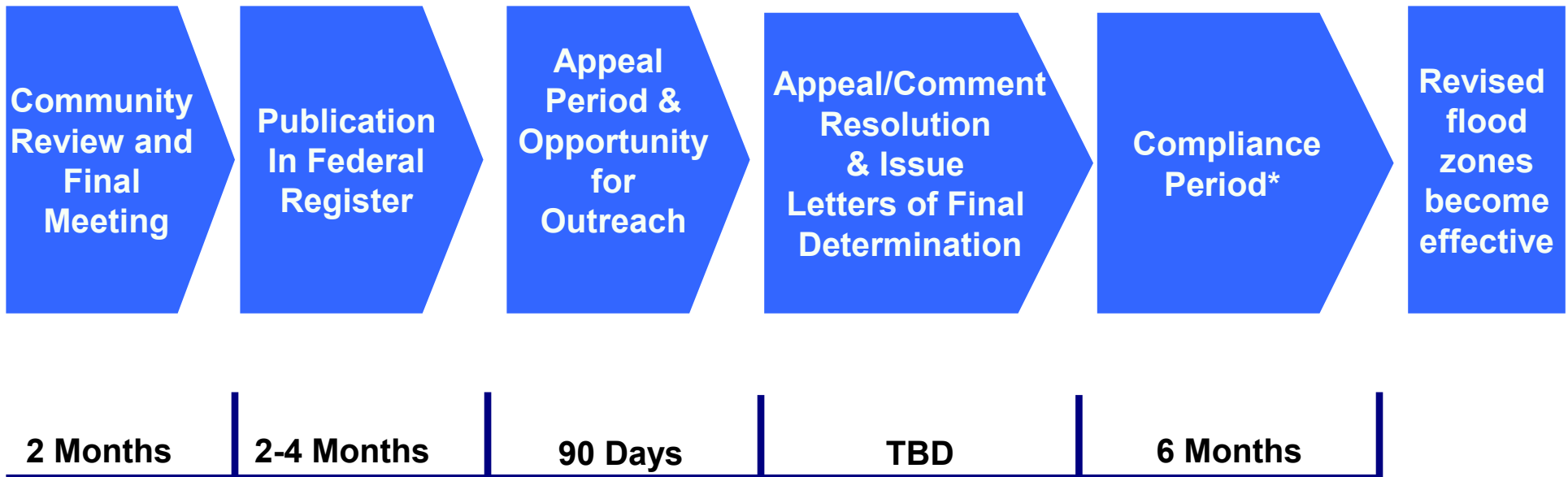
Study Results – Preliminary Summary of Map Actions (SOMA)

- Provides a comprehensive list of effective LOMCs on revised FIRM panels
- Categorized by
 - LOMCs Incorporated (Category 1)
 - LOMCs Not Incorporated (Category 2A & 2B)
 - 2A – LOMCs on Revised Panels
 - 2B – LOMCs on Unrevised Panels
 - LOMCs Superseded (Category 3)
 - LOMCs To Be Redetermined (Category 4)

Please Review Your Preliminary SOMA!

Post-Preliminary Processing

Post-Preliminary Processing



*Compliance Period includes map panel adoption and floodplain regulations updated/adopted for NFIP compliance.

Schedule – Draft / Tentative Timeline

Task	Date
Preliminary Distribution by FEMA	April 29, 2022
30 Day Community Review Ends	May 29, 2022
CCO Webinar/Meeting	August 16, 2022
Federal Register Proposed Notice Publication	*October 2022
Appeal Period Initiation	*November 2022
Appeal Period Ends	*February 2023
Potential LFD Date	**Summer 2023
Maps Become Effective	**Winter 2024
Floodplain Regulations Updated/Adopted	**Winter 2024
	* Approximate Time Frame ** Dependent on Potential Appeal Receipts

Comments and Appeals

■ Comments

- Non-technical (e.g. road name, corporate limit revisions or request pertaining to the preliminary)

■ Appeals

- Addition/modification of SFHA boundaries, SFHA zone designations, and/or regulatory floodways
- Valid appeal must be accompanied by ALL engineering data needed to update the preliminary database, FIS report and FIRM panels
- Must be **submitted, in writing, within the 90-day appeal and comment period** to FEMA (Region 9, 1111 Broadway, Suite 1200, Oakland, CA 94607)

Floodplain Management Regulations

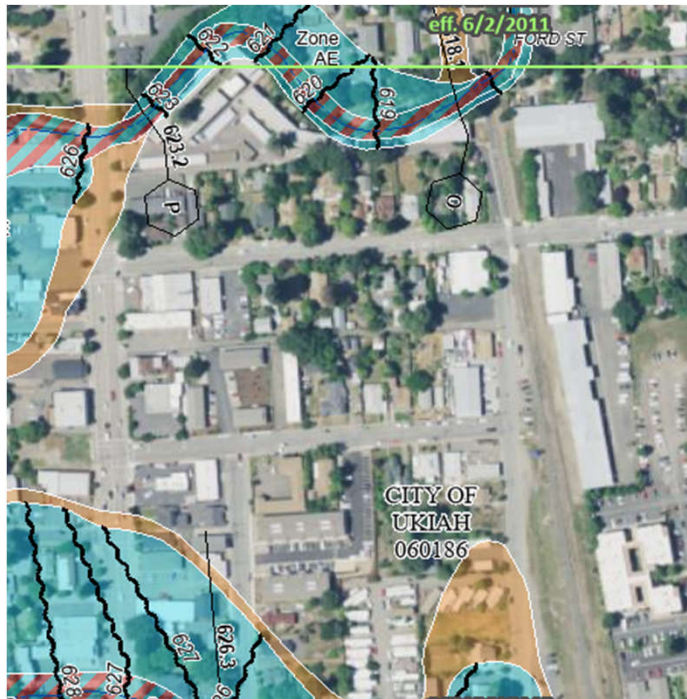
- **Responsibilities of Communities and FEMA**
 - Floodplain Regulations in Ordinance updated and adopted by governing body
 - Community adoption of updated maps at date of effective
 - FEMA will support Public Meeting upon request for risk communication and flood insurance implications

Flood Damage Reduction Ordinance

- FEMA will review the Community's regulations (ordinance, municipal codes) to ensure the revised FIRM panels and FIS report are adopted and meet the minimum Federal regulations found in 44 CFR, Section 60.3.

Flood Insurance

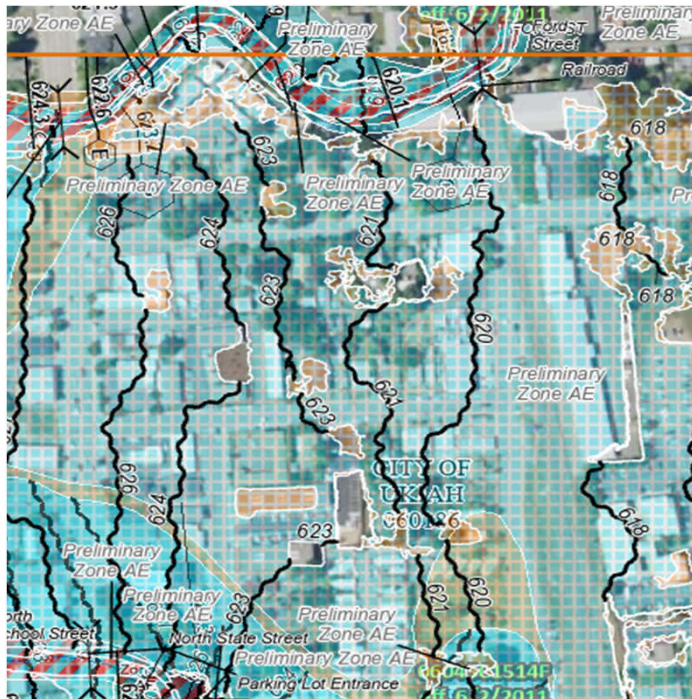
Effective



X Flood Zone



Preliminary



AE Flood Zone

When is Flood Insurance Required?

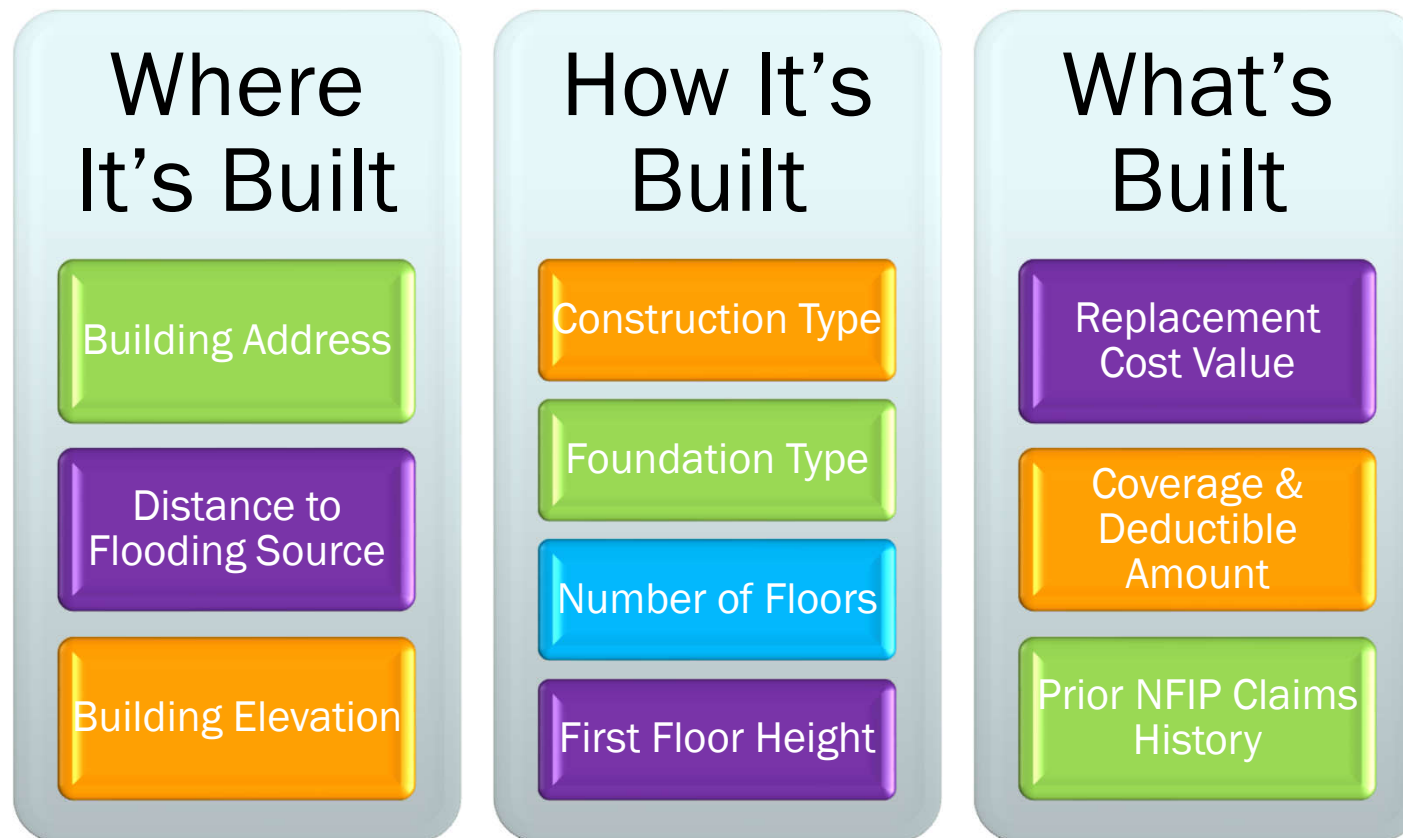
- Buildings in A and V zones

with

- Federally backed loans



How Much Does a NFIP Policy Cost?



New Rating System Effective: October 1, 2021
For More Information: <https://www.fema.gov/flood-insurance/risk-rating>

Is There a Discounted Policy Available?

Best Rating Option:

- Discounted Newly Mapped Program Available For:
 - Property owners remapped from flood zones “X”, “D” or “A99” into any type of “A” or “V” zone
 - Coverage needs to be effective within 12 mo. of new map effective date
 - Allow up to a 30-day waiting period



Where Can You Buy Flood Insurance?

Contact Your Local Insurance Agent



For assistance locating an insurance agent visit or call:

www.floodsmart.gov | 1-877-336-2627

Insurance Outreach Resources for Map Changes

<https://agents.floodsmart.gov/flood-maps/agent-resources>



Resource: MSC Flood Map Change Viewer: [Flood Map Changes Viewer \(arcgis.com\)](https://arcgis.com)

Next Steps For Local Communities



- Review the preliminary products (panels, SOMA, FIS report, database)
- Develop an outreach strategy
- Collect comments and appeals as necessary
- Use Preliminary Data as best available data
- Update Floodplain Ordinance
- Conduct public outreach
 - Raise public awareness of flood risk and flood insurance requirements
 - Create outreach plan

Review the Preliminary Products

Examples of items that communities should review on a Preliminary FIRM:

- Are the Flood Zones correctly labeled?
- Are BFEs and depths correctly labeled?
- Are road names correctly labeled?
- Are the Political Boundaries correct?
- Is the address for the Community Map Repository on the FIRM Index correct?
- Are all FEMA approved Letters of Map Changes included in the SOMA?

Do these checks now – correcting the maps is no cost to you!

Risk Communication & Resources

- **NFIP Website:**
<https://www.fema.gov/flood-insurance>
- **FloodSmart Website:**
<https://www.FloodSmart.gov>
- **Map Service Center:**
<https://msc.fema.gov/portal/home>
- **MSC Map Change Viewer:**
<https://msc.fema.gov/fmcv>
- **CRS Website:** <https://crsresources.org>



Adoption of Flood Insurance Rate Maps by Participating Communities

FEMA 495
January 2019



https://www.fema.gov/sites/default/files/2020-07/fema_adoption-flood-insurance-rate-maps-participating-communities_bulletin.pdf

Outreach Suggestions

- Develop a Community Outreach Plan:
 - Following community officials' review of preliminary maps, hold a public meeting.
 - Direct mailings to affected property owners / tenants.
- FEMA will support public meetings hosted by the community.
- FEMA has templates to help you get started with outreach.

Next Steps for FEMA



- **Publication of the Proposed Flood Hazard Determination (FHD) Notice**
- **After the Notice has published**
 - FEMA will distribute news releases and coordinate with local public information officers prior to initiation of the appeal period.
 - Communities are notified two weeks before the appeal period begins by way of certified letter sent to the CEO.
 - 90-day regulatory appeal/comment period starts the day of the 2nd newspaper publication.

Community Support Contacts

FEMA Region 9

Patrick Clancey (Project Manager)

Patrick.Clancey@fema.dhs.gov (510) 289-5326

Nancy Steinberger (Senior Engineer)

Nancy.Steinberger@fema.dhs.gov (202) 430-4945

Adam D. Lizarraga (NFIP Regional Liaison, Region 9)

Adam.Lizarraga@associates.fema.dhs.gov (916) 375-0927

Serena Cheung (Floodplain Mgmt Specialist)

Serena.Cheung@fema.dhs.gov (510) 424-2783

Edie Lohmann (NFIP Insurance Specialist)

Edith.Lohmann@fema.dhs.gov (510) 912-6333

State of California

Kelly Soule (NFIP Coordinator)

Kelly.Soule@water.ca.gov

Michael Mierzwa (State Floodplain Manager)

Michael.Mierzwa@water.ca.gov

MD Haque (State Floodplain Mapping Lead)

MD.Haque@water.ca.gov

STARR II

Brock Remus (Deputy Project Manager)

Brock.Remus@atkinsglobal.com (816) 235-3461



FEMA

Questions & Answers

RiskMAP
Increasing Resilience Together

