

Community Pipeline Safety Initiative

Ukiah City Council

September 21, 2016





Improving Pipeline Safety and Reliability

- PG&E's top priority is the safety of our customers and communities – we are testing, studying and upgrading our gas system, including:
 - **Hydrostatic pressure testing** which verifies the pipeline's strength and safe operating pressure
 - **Internal pipe inspection robots** to check for signs of corrosion
 - **Valve automation** to allow faster response during gas emergencies
 - **Leak survey** of our entire gas pipeline system more frequently
 - **Aerial and ground patrols** to identify any excavations, signs of construction and other potential safety concerns

Program at a Glance

WHAT WE'RE DOING



Checking the area above the gas transmission pipeline for trees and structures that pose an emergency access or safety concern



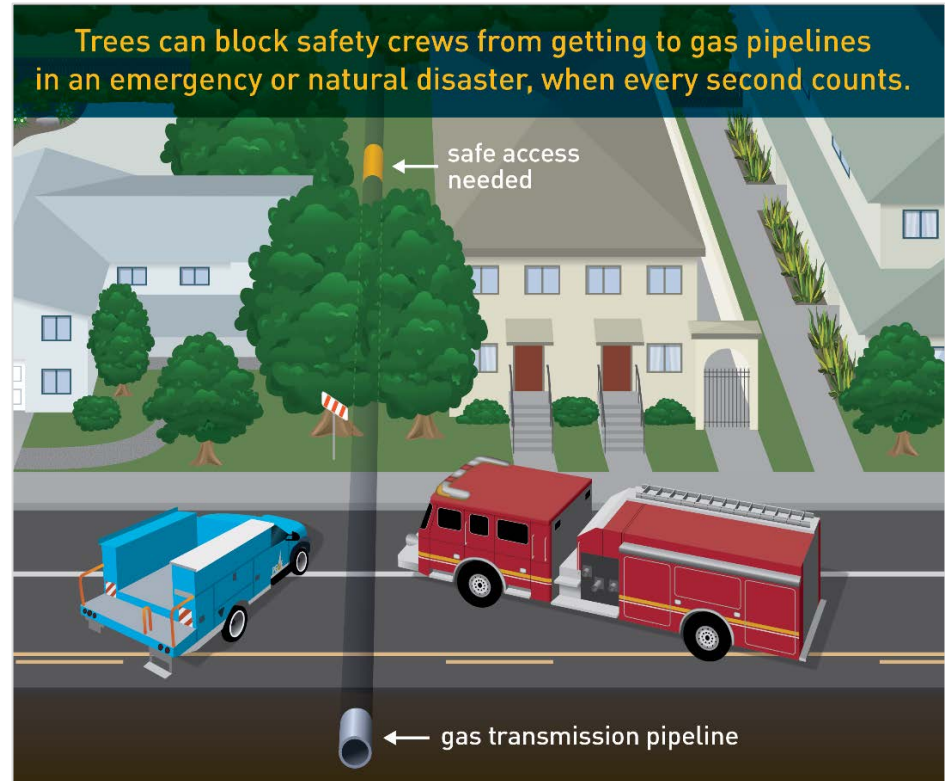
Helping to ensure immediate access for safety crews, and preventing potential damage to the pipe



Working with our customers and communities where a safety risk has been identified to develop shared solutions



Planting new trees at a safe distance from the pipeline and restoring the area to preserve the natural beauty of our communities



Working with First Responders

“I value PG&E’s commitment to keeping our community safe. Being able to quickly and easily reach a gas pipeline in the event of an emergency is critical, and PG&E’s community gas safety work is helping ensure we have that access.”

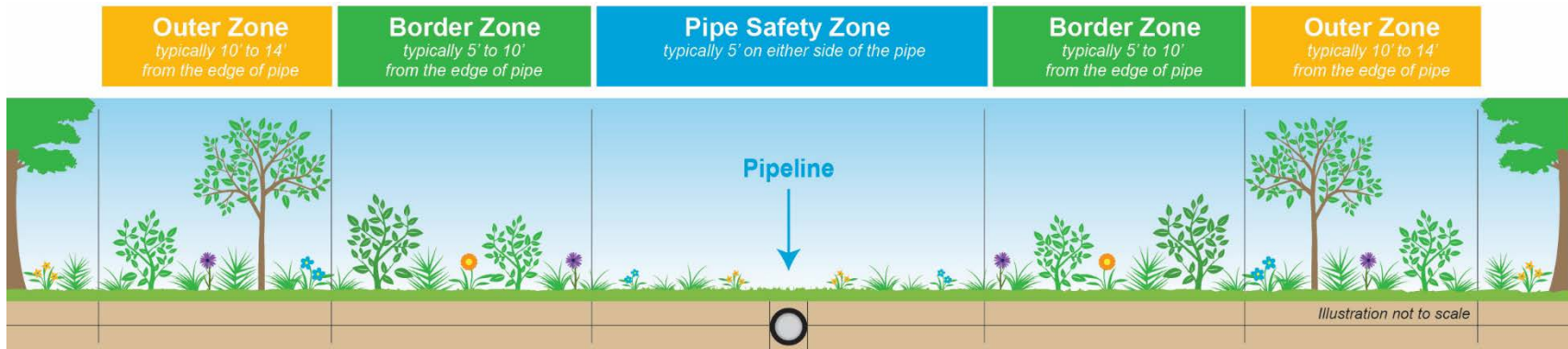
**John Bartlett, Fire Chief, Ukiah Valley
Fire Authority**



First responders depend on immediate access in an emergency

Guide to Safe Landscaping

Making sure the right plants and trees are located in the right location adds to the safety and natural beauty of your community



Pipe Safety Zone	Lawns, flowers, low-profile grasses and low-growing herbaceous plants work well within the Pipe Safety Zone.
Border Zone	Small to medium shrubs with a trunk or main branch less than 8" in diameter at full maturity work well within the Border Zone. Diameter is measured 4.5 feet above the ground.
Outer Zone	Large shrubs and small trees with a trunk or main branch less than 36" in diameter at full maturity work well within the Outer Zone. Diameter is measured 4.5 feet above the ground.

Please note easement widths can vary and the above represents best practices and guidance for safe landscaping near gas pipelines.

Tree-by-Tree Review

- We understand how important trees are to your community and the environment
- To ensure we are only replacing trees that pose an emergency access or safety concern, we conduct a review of all trees near the gas pipelines
- The review is completed by gas safety experts and involves analyzing such factors as tree height, species and distance from the pipe
- We share the results with the city or property owner and, together, work to develop a path forward



Tree Replacement and Restoration




- When a tree needs to be replaced for safety reasons, PG&E will work with the private property owner to offer the following:
 - **Replacement:** Provide replacement tree(s) or an in-lieu payment for each tree removed
 - **Restoration:** Work together to develop a landscape plan that restores the area with native, drought-tolerant landscaping such as grasses, mulch or bark
- We recognize every customer and yard is different, and we will address special circumstances on a case-by-case basis





Community Pipeline Safety Initiative – City of Ukiah






-  Franchise/City-Owned Trees Proposed for Removal
-  City Boundary
-  Gas Transmission Pipeline

PG&E Critical Infrastructure Information. Facilities to be operated by PG&E personnel only. Point, pipeline and boundary locations are approximate and for illustrative purposes only. Data subject to updates. Call 811 before you dig. Map Created: 9/9/2016



Community Pipeline Safety Initiative – City of Ukiah



-  Franchise/City-Owned Trees Proposed for Removal
-  City Boundary
-  Gas Transmission Pipeline

PG&E Critical Infrastructure Information. Facilities to be operated by PG&E personnel only. Point, pipeline and boundary locations are approximate and for illustrative purposes only. Data subject to updates. Call 811 before you dig. Map Created: 9/9/2016

Community Partnership and Outreach

- It is important to us that our customers get answers to their questions and support this critical safety work
- Our outreach includes:
 - Meeting with city officials and staff to discuss the safety risks and work together to plan for gas safety work in public areas
 - Communicating about gas pipeline safety to all residents within 500-feet of the safety work
 - Notifying nearby residents before any safety work takes place
 - Hosting open houses near work areas
 - Contacting private property owners regarding any safety work proposed for their property
- We will not move forward with any planned work until we have a signed agreement in place with the customer



Contact Information

- For questions regarding the upcoming pipeline safety work, please contact Leslie Horak, Public Affairs Representative, at **1-707-577-7206** or by email at leslie.horak@pge.com
- For more information, visit us at pge.com/GasSafety
- To view an online map of our natural gas transmission pipelines, please go to pge.com/pipelinelocations



Thank You

